



Presentation slides will be uploaded
onto the School Website

National Digital Literacy Programme (NDLP)

Briefing for Parents
5 January 2024



DAMAI
SECONDARY SCHOOL

Content

- The National Digital Literacy Programme and the PLD Initiative @ Damai Sec
- Supporting Students in the Safe and Effective Use of the Devices
- Device and Funding Information
- What's Next?

The National Digital Literacy Programme and the PLD Initiative @ Damai Sec

The National Digital Literacy Programme (NDLP)

The NDLP was launched in March 2020 to help students **strengthen their digital literacy and acquire digital skills** needed to navigate an increasingly digitalised world.

Under the NDLP, all secondary school students will **own a school-prescribed Personal Learning Device (PLD)**. Students may use funds from their Edusave Account to pay for the PLD.

Desired Student Outcomes

Future-Ready and *Responsible Digital Learners* who are

- self-directed and collaborative in their learning
- equipped with 21st Century Competencies and Digital Literacies
- imbued with sound moral values to be responsible users of technology



How will your child use the PLD in Damai Sec?

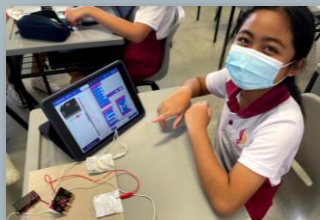
Learn Anywhere, Anytime



Increase Productivity



Active Learning



Create Digital Products



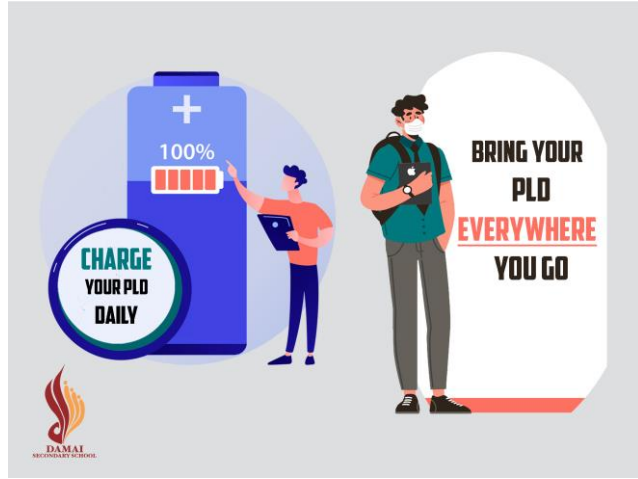
Supporting Students in the Safe and Effective Use of the Devices

Supporting Students in the Safe and Effective Use of the Devices

The school has measures in place to enable a safer digital environment for learning with the use of PLDs, e.g.

- School rules on digital device use
- Classroom management and routines
- Cyber Wellness Education in CCE
- Partnering parents/guardians to support students in their use of technology for learning
- Device Management Application (DMA) to support a safer digital environment for learning

Classroom management and routines



- Daily Routines
 - Charging of device
 - Care & securing device
- Classroom management
 - Teachers will manage the use of the PLDs during lessons using the Device Management Application (DMA).
- Procedures for students who face issues with their device, damage or lose their device

Cyber Wellness Education

Educating students on Cyber Wellness

MOE has made significant changes to the Character and Citizenship Education (CCE) curriculum. Cyber Wellness lessons will feature significantly in these lessons.

School-wide implementation of CCE

- Peer Support Leaders – Cyber Wellness
- Cyber Wellness Talks

In addition, through other programmes in school, students will continue to learn to be **respectful, safe, and responsible users of technology**.

More information can be found on the school website:

<https://damaisec.moe.edu.sg/information/parents/cyber-wellness-tips>

Partnering Parents/Guardians

- We would like to partner parents/guardians to ensure that students are well supported in their use of technology for learning.
- As parents/guardians, you can help in the following ways:
 - Model good digital habits for your child/ward e.g. parents/guardians not using devices during family meals.
 - Know your child/ward well, and have conversations with your child/ward about safe and responsible use of technology.
 - Discuss and come up with ground rules for internet/device usage that both your child/ward and you can agree on.
 - Encourage your child/ward to use productivity tools using his/her PLD, to organise information and simplify tasks for efficiency.

Additional Resources for Parents

To support you in keeping your child safe online, you may refer to these additional resources:

- Parent Handbooks (I) and (II) on Learning with a Personal Learning Device (available on School Website: <https://damaisec.moe.edu.sg/our-curriculum/national-digital-literacy-programme>)
- Parent Kit on Cyber Wellness for Your Child (<https://go.gov.sg/moe-cyber-wellness>)
- Schoolbag article 'Keeping our teens safe online' (<https://www.schoolbag.edu.sg/story/keeping-our-teens-safe-online>)
- MOE Cyber Wellness Programme (<https://www.moe.gov.sg/programmes/cyber-wellness/>)
- Media Literacy Council (<https://go.gov.sg/better-internet-sg>)
- National Library's Learning & Information Literacy Resources (<https://sure.nlb.gov.sg/>)
- TOUCH Community Services (<https://help123.sg>)

Device Management Application (DMA)

- Your child's/ward's PLD will be installed with a Device Management Application (DMA) to provide a safer digital environment for learning.
- Installation of the DMA will be performed after the collection of the device. Students will be guided on the installation.
- This applies to both devices purchased through the school and pre-existing student-owned devices.
- The DMA will be **funded by MOE** and will be **uninstalled** from the device **when your child/ward graduates/leaves the school.**

In-School DMA Settings (Default)

Schools will determine DMA settings for **in-school use**. As a default, these settings will continue to be in place after school as well:

- MOE and the school will set the level of web content filtering, including filtering out objectionable content or content that may not be conducive to teaching and learning (e.g. social media, pornography, gambling, or websites containing extremist content).
- Students will be able to use the device from **6 a.m. to 11 p.m.** daily.
- The school will determine the apps and programs to be installed to support teaching and learning.

Providing Parents/Guardians with Greater Choice for After-School PLD Use

Default	Option A	Option B
In-school DMA settings will continue after school hours	Parents/Guardians can modify the DMA settings after school hours	DMA is disabled after school hours
For parents/guardians who want their child's/ward's use of the devices to be restricted only to teaching and learning, and prefer to leave it to the school to decide on DMA settings after school hours.	For parents/guardians who want more leeway over the use of the device, and prefer to take charge of the level of restrictions for their child's/ward's use of the device after school hours.	For parents/guardians who do not want their child's/ward's use of the device to be regulated by DMA after school.

- Having **default school settings** continue after school hours is the best option for parents/guardians who prefer not to, or do not feel ready to manage their child's/ward's device use on their own.
- The school will provide parents/guardians with more information on exercising the options.
- Parents/guardians can request to change their choice of DMA settings at any time.

Device & Funding Information

DSS Personal Learning Device



The school will be using the **Apple iPad 10.9" 10th Gen** for teaching and learning.

Total cost with GST: **S\$1,043.10**

- Processor: A14 Bionic Processor
- Memory (GB): 4GB
- Storage (GB): 64GB

DSS Personal Learning Device

The school chose the device because it:



Enhances teaching & learning

- Digital notetaking with stylus
- Seamless learning experience with technologies such as SLS
- Wide range of other educational & creation apps

**Is lightweight
& easy to use**

**Has a long
battery life**

Device Bundle

Your child's/ward's PLD will come with the **Enhanced Device Bundle** which includes:

- 3-year warranty and 3-year insurance
- 2 repairs or 1 replacement claim



Funding Support for Singapore Citizen (SC) Students

- **The cost of the device bundle can be paid using your child's/ward's Edusave account,** after setting aside provision for payment of miscellaneous fees.
- To ensure the affordability of devices, MOE has provided Edusave top-ups of \$200 in 2020 to 2022, and \$300 in 2023, to all eligible Singaporean students in primary and secondary schools.
- This is on top of the annual \$290 credited into the Edusave account for Secondary School students and \$230 for Primary School students.
- Call 6260 0777 to check on your child's Edusave Balance

Funding Support for Singapore Citizen (SC) Students

- For SC students who are on MOE Financial Assistance Scheme or whose family's monthly income meets the following criteria:

Gross Household Income (GHI) \leq \$3,000, or

Per Capita Income (PCI)[#] \leq \$750

MOE will subsidise **\$350**.

- The remaining amount will be payable from the students' Edusave account. If there is insufficient balance in the students' Edusave account for the remaining amount, MOE will provide additional subsidy so that the cash out-of-pocket (OOP) is **\$0**.

[#] PCI is GHI divided by the number of household members.

Funding Support for Singapore Citizen (SC) Students

- For SC students whose family's monthly income is*:
 $\$3,000 < \text{Gross Household Income (GHI)} \leq \$4,400$, or
 $\$750 < \text{Per Capita Income (PCI)} \leq \$1,100$
MOE will subsidise **\$200**.
- The remaining amount will be payable from the students' Edusave account. If there is insufficient balance in the students' Edusave account for the remaining amount, MOE will provide additional subsidy so that the cash out-of-pocket (OOP) is **not more than \$50**.

*This will automatically apply to our School-based FAS students.

If your child is not on School-based FAS and is within the indicated income bracket, please approach the school's General Office if you require financial assistance for the PLD

What's Next?

What's Next (For Singapore Citizens)

Time Frame	Activity
By 12 Jan 2024 (Fri) *Parents/Guardians who <u>do not intend</u> to purchase the device bundle through the school must also respond via the form	Submit Parental Consent for the Purchase of Personal Learning Device (PLD) <ul style="list-style-type: none">• Online (Singpass required): https://go.gov.sg/pdlpadmin or• Parents without access to Singpass can submit their consent via hardcopy, which includes the following:<ul style="list-style-type: none">- Intent to Purchase Personal Learning Device (PLD) (Form A)- Standing Order for Use of Edusave Account. (Form B)
Feb 2024	<ul style="list-style-type: none">• Each student will receive a personalised school bill• (If applicable) Parent/Guardian to make payment via Giro / Cash / SAM / Cheque
Mar/Apr 2024	Collection of Devices by Students

Collection of Devices

Your child will be collecting his/her device in school in **March / April 2024**.

If you would like to verify the condition of the device during collection with your child/ward:

- You may arrange to collect the device **at the vendor's service / collection centre*** or appoint an adult proxy to do so.
- Your child/ward would need to bring the device to school and arrange for the school's IT department to install the DMA.

Please email chin_pei_kee@schools.gov.sg for further advice or clarification if you would like to make this arrangement.

* Parents/Guardians (or adult proxy) will **not** be able to collect the PLD from the school.

Important Contacts / Helplines

To access/find out more about...	Contact/Helpline
This deck of slides	https://damaisec.moe.edu.sg/our-curriculum/national-digital-literacy-programme
Edusave Balance	6260 0777
Financial assistance	damai_ss@moe.edu.sg
Other enquiries	Mrs Lee Pei Kee (chin_pei_kee@schools.gov.sg)

Thank you