

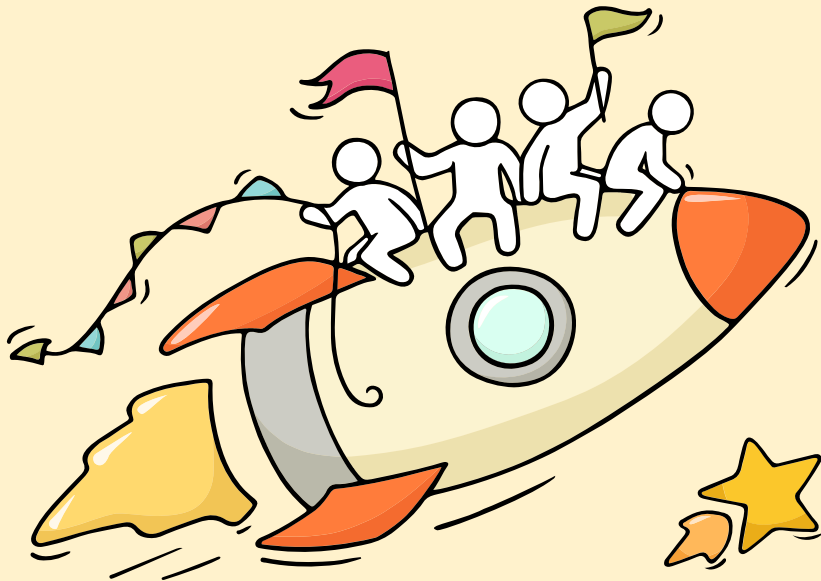
# Welcome Back!

Briefing Slides for Release of 2025 N-Level Results



# Dear students,

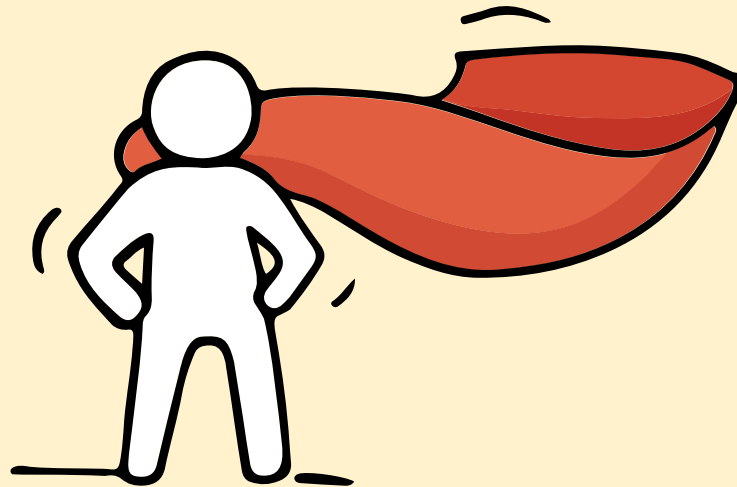
You have worked hard to reach this stage. Let's celebrate your efforts!



*Finally, we are going  
to get our results!*



Remember that while **everyone's educational journey is different,**  
**we can each have a fulfilling outcome!**



# Resources to support you as you receive your results

Receiving your results and making decisions about your post-secondary pathways can be exciting to some, but stressful to others.

Scan this QR code for an infographic with some helpful resources to support you.



<https://go.gov.sg/2025nlevelstudentresource>



# Thinking about Your Next Step?

Consider these questions...

Who am I?



How Do I Get There?

In the infographic, you can find resources which can help you make informed decisions.

## PLANNING YOUR NEXT STEP

These resources will help you chart your path ahead:



• What's Next Brochure  
<https://go.gov.sg/whats-next-nlevel>



• Contact the ECG Centre @ MOE  
<https://go.gov.sg/moe-ecg-centre>

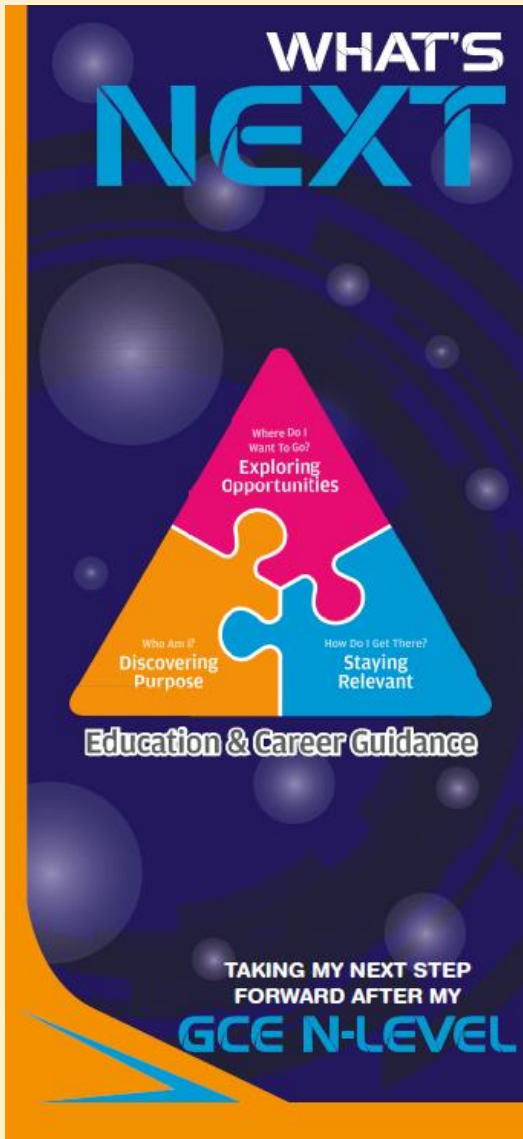


• MySkillsFuture Student Portal  
<https://go.gov.sg/MySFSec>



• Chat with your school's ECG Counsellor

# Resources to help you make informed decisions



## PLANNING YOUR NEXT STEP

These resources will help you chart your path ahead:



- What's Next Brochure  
<https://go.gov.sg/whats-next-nlevel>



- Contact the ECG Centre @ MOE  
<https://go.gov.sg/moe-ecg-centre>



- MySkillsFuture Student Portal  
<https://go.gov.sg/MySFSec>



- Chat with your school's ECG Counsellor



## MySkillsFuture Student Portal

Use the information and tools to explore various education and career pathways and take charge of your future.

# Resources to help you make informed decisions

You can find the details of the various admissions exercises in the **Post-Secondary Admissions Exercises booklet** that can be downloaded from:

<https://www.moe.gov.sg/post-secondary/admissions>

- Direct-Entry-Scheme to Polytechnic Programme (DPP)
- Polytechnic Foundation Programme (PFP)
- Joint Intake Exercise (JIE) 'N' / 'E'
- NAFA Foundation Programme (NFP)





# Resources to help you make informed decisions

## Post-Secondary Education

Learn more about the  
post-secondary education institutions



<https://moe.gov.sg/post-secondary/overview>



# Concerned about your next steps?

**Stop**

- Calm yourself down. Take a few deep breaths.

**Think**

- Think through the different options that are available for you.
- Remember that the N-Level examination is not the end point and is only one part of your life journey.

**Do**

- Have conversations with trusted adults who know you well to advise and guide you (parents, teachers, ECG Counsellor).
- Decide and act based on your options.

**When you receive your results, you may experience a range of emotions.**

**Managing these emotions well will allow you to stay calm and make rational decisions.**

# Reaching out for support is a sign of strength

If you have questions about your options or are not coping well, you can reach out to trusted adults such as a parent/guardian, teacher, School Counsellor or ECG Counsellor. You can also talk to a trusted friend.

*Who can we  
go to for ECG  
advice?*

Make an appointment to speak with  
your ECG Counsellor in school

**OR**

Make an ECG counselling  
appointment via the  
ECG Centre @ MOE

<https://go.gov.sg/moe-ecg-centre>

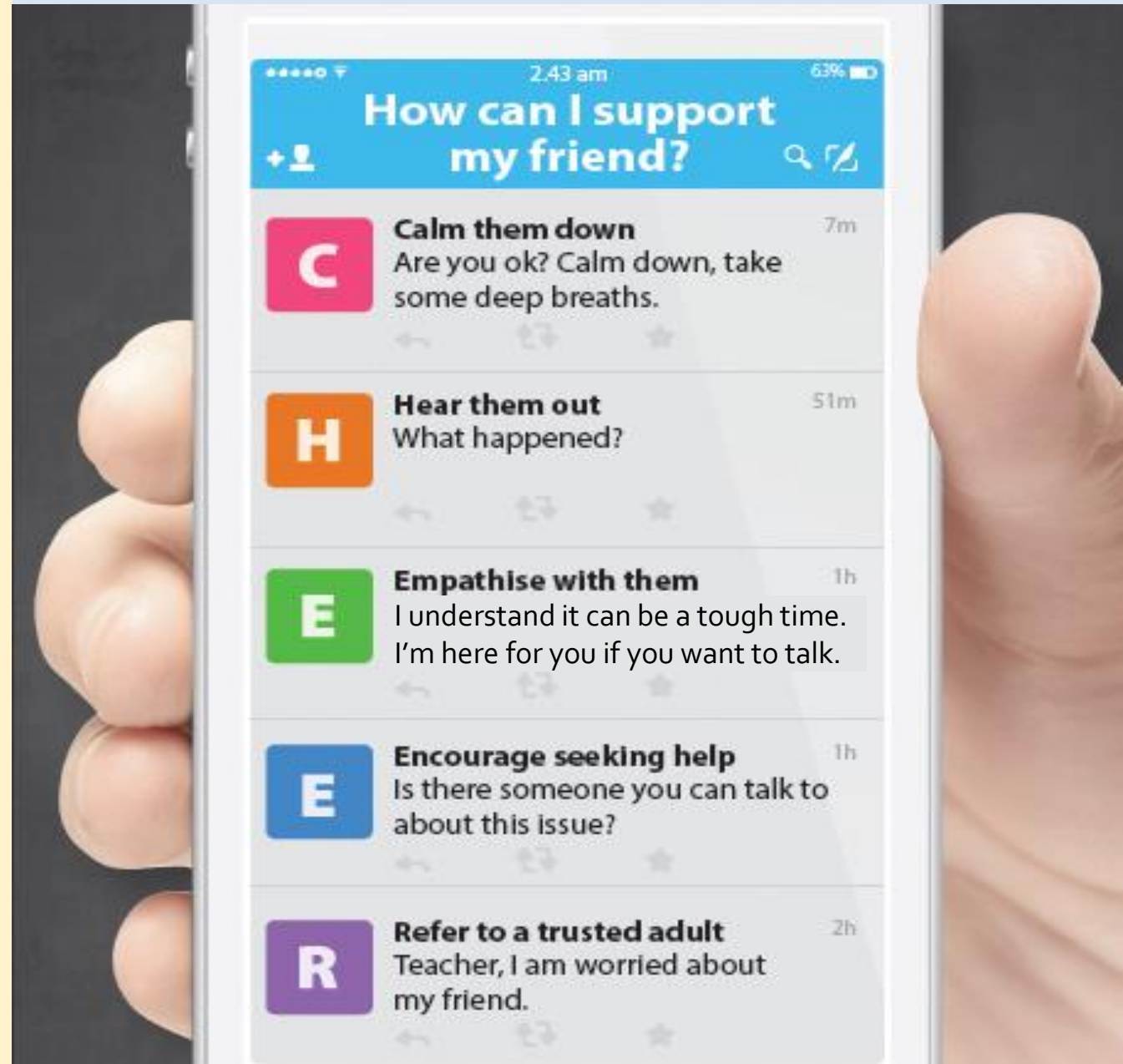


# Supporting Your Friend

- We may each experience different emotions upon receiving the results.
- You can share your friends' joy by congratulating them.
- If your friends appear to be disappointed with their results, encourage them.
- Alert a teacher if you are worried for them.



Keep a lookout for your friends in distress. You can support them in the following ways:



**Having difficult emotions during a stressful and uncertain period is normal. Keep a look out for some of these signs:**

**D  
I  
S  
T  
R  
E  
S  
S**

Deliberately avoiding others

Increased irritability, restlessness, agitation, stress and anxiety

Sending or posting moody messages on social media

Talking about death or dying

Reacting differently or gradually losing interest in things they used to like

Eating more than usual or having a much reduced appetite

Sleep pattern changes with difficulty falling asleep or oversleeping

Slowing down of energy levels

If you notice any of these signs in yourself or your friends,  
**have a chat with your School Counsellor or teacher,**

Or contact SOS 24-hour hotline at **1767** or SOS 24-hour CareText Whatsapp at **91511767**  
For cyber wellness related matters, call Help123 at **1800-612-3123\*** or email **hello@help123.sg**

\*available only from Mon to Fri (excluding Public Holidays), from 9am - 6pm.



© 2023 Guidance Branch, Student Development Curriculum Division (SDCD), Ministry of Education, Singapore. No part of this final product may be reproduced or transmitted in any form or by any means, electronic or mechanical, including photocopying, recording or any other information storage and retrieval system, without written permission from SDCCD, MOE.

**Keep a lookout for  
some of these signs in  
your peers or in  
yourself**

*How can we  
support one  
another?*



# Support is readily available for you.

There are other hotlines and chats available if you are more comfortable seeking help using these platforms.

**SOS** provides round-the-clock emotional support for those in distress, thinking of suicide or affected by suicide.

Call: **1767**  
(24-hour helpline)

WhatsApp: **9151 1767**  
(24-hour Care Text)

**Carey** is an online platform by Care Corner that provides free mental health check-ins with mental health professionals. Find out more at: <https://carey.carecorner.org.sg/>

**Community Health Assessment Team (CHAT)** provides personalised and confidential mental health checks and consultation for youths. To speak with a youth support worker, you can:

Visit: **CHAT Hub at \*Scape, 2 Orchard Link, #04-01A**  
Call: **6493 6500 / 6501**  
Email: [chat@mentalhealth.sg](mailto:chat@mentalhealth.sg)

**eC2** is an e-Counselling Centre where you can talk to a trained counsellor about the issues you are facing, right where you are.

Chat with a counsellor at: [www.ec2.sg](http://www.ec2.sg)  
*Monday – Friday (Excluding Public Holidays): 10am – 12pm & 2pm – 5pm*

**Mindline** is Singapore's national mental health helpline and textline service. The service is manned by trained counsellors who are ready to listen and support you.

Call: **1771**  
(24-hour helpline)  
WhatsApp: **6669 1771**  
(24-Hour messaging service via WhatsApp)

**TOUCHline** is a helpline to provide youths with emotional support and practical advice.

Call: **1800 377 2252**  
*Monday- Friday (Excluding Public Holidays): 9am – 6pm*





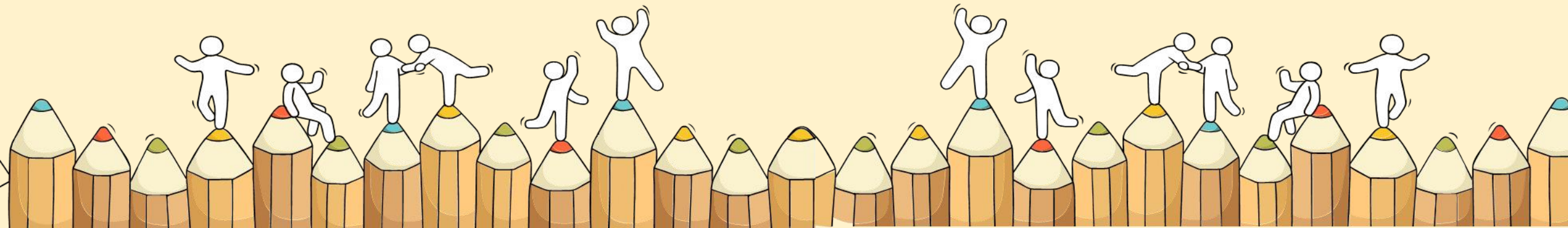
**The N-Level examination is  
one milestone in your  
education journey, and  
there are many more  
exciting pathways ahead.**

**Your future holds many  
opportunities waiting to be  
discovered!**



# Admissions Exercises

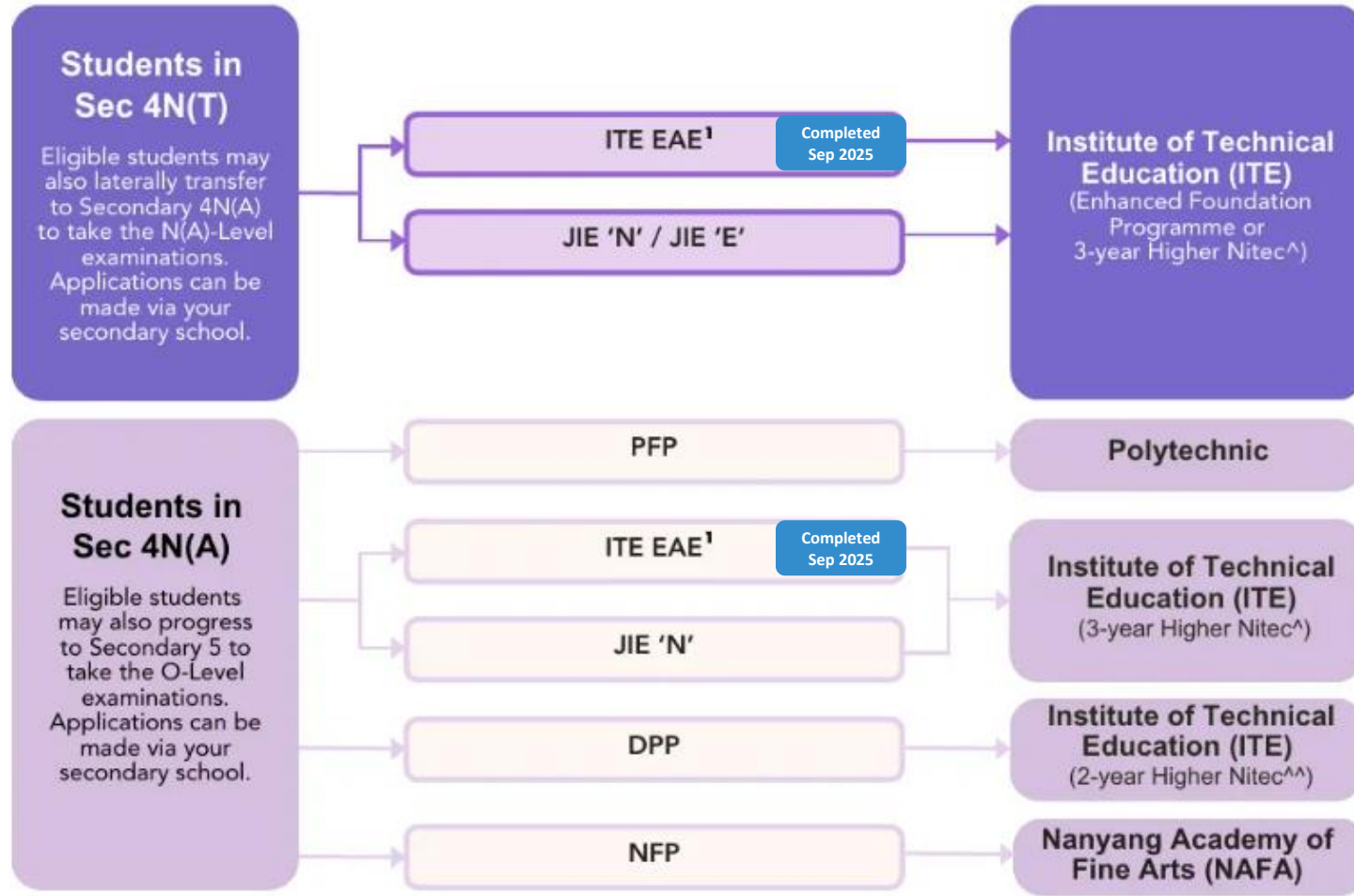
Things to note





# Post-Secondary Admissions Exercises for Students in Sec 4 Normal (Technical) and Normal (Academic)

## Admissions exercises to take part in



Source: [Post-Secondary Admissions Exercises booklet](#)

<sup>1</sup> Students apply through these admissions exercises before their examinations.

^For the list of 3-year Higher Nitec courses, please visit  
<https://www.ite.edu.sg/secondary-school-students/ite-full-time-courses/3-year-4-year-higher-nitec>



^^For the list of 2-year Higher Nitec courses  
under the DPP, please visit <https://www.ite.edu.sg/secondary-school-students/ite-full-time-courses/higher-nitec-for-dpp>



# Details of Admission Exercises – ITE EAE offers

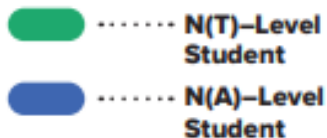


## ITE EAE – ITE Early Admissions Exercise

ITE EAE is an aptitude-based admissions exercise that allows students to apply and receive conditional offers for admission to ITE based on their aptitude and interest, prior to receiving their final GCE N-Level examination results. It allows students to demonstrate their aptitudes and interests apart from academic grades, thus allowing a wider range of talents to be recognised.



[go.gov.sg/iteeae](https://go.gov.sg/iteeae)



## FOR SEC 4(NA) AND 4(NT) COHORT

- Students with confirmed ITE EAE offers are expected to honour their EAE offers.
- Students will not be eligible to participate in the Joint Intake Exercise (JIE).
- However, students can still apply for the Direct-Entry-Scheme to Polytechnic Programme (DPP) after the release of the GCE 'N' Level results, or Polytechnic Foundation Programme (PFP) after the release of the GCE 'O' Level results, if you qualify.

## Check with FTs

Please check with FTs if you have met the minimum entry requirements (MERs) and successfully retained your confirmed ITE EAE offer. Also check the course and college you are posted to.

# Details of Admission Exercises – 4N(A) DPP



## JIE 'H' exercise

### DPP – Direct-Entry-Scheme to Polytechnic Programme

DPP allows Secondary 4N(A) students to be admitted directly into selected 2-year Higher Nitec courses at ITE without having to sit for the O-Level examinations. DPP students who successfully complete their Higher Nitec courses at ITE and attain the required qualifying Grade Point Average (GPA) scores are guaranteed a place in a polytechnic diploma course mapped to their Higher Nitec course.

DPP: [go.gov.sg/applydpp](https://go.gov.sg/applydpp)

- Obtained ELMAB3 aggregate of 19 points or better (excluding CCA bonus points) and
- Meet course-specific entry requirements
- Students can select up to 12 choices

(Note: Eligibility does not guarantee placement.)

<https://www.ite.edu.sg/secondary-school-students/ite-full-time-courses/higher-nitec-for-dpp/>.

- Upon release of the GCE N-Level results, eligible DPP students may apply for DPP via the ITE website (<https://www.ite.edu.sg>).
- Students who sat for both GCE N- and GCE O-Level examination subjects can apply for the DPP in the main application period in Dec using their GCE N-Level results and school-based preliminary examinations for O-Level subjects.

- Upon receiving their DPP posting results, students will have to indicate in the online system whether they are **accepting / rejecting / appealing their DPP offers**.
- Students who accept their DPP offers will be required to complete their College registration by **12 January 2026 (Mon)**. The 10-week DPP preparatory programme will commence on the same day.

# Details of Admission Exercises – 4N(A) PFP



## PFP – Polytechnic Foundation Programme

PFP is a one-year programme that offers a practice-oriented curriculum taught by polytechnic lecturers to better prepare polytechnic-bound Secondary 4N(A) students for entry into a polytechnic diploma.

Starting from the AY2026 PFP intake, students will be admitted into a PFP cluster, and progress to one of the diplomas within the cluster after completing the one-year programme.

The exceptions are Diploma in Nursing, Diploma in Early Childhood Development & Education, and Diploma in Tamil Studies with Early Education, for which students can be admitted either via the diploma-specific PFP or the relevant PFP cluster.

PFP: [go.gov.sg/pfp](https://go.gov.sg/pfp)

- **Criteria for PFP:**
  - Obtain an ELMAB3 aggregate not exceeding 12 points prior to deducting CCA bonus points; and
  - Meet the following subject-specific requirements of the courses they are applying for  
[https://pfp.polytechnic.edu.sg/PFP/pfp\\_eligibility.html](https://pfp.polytechnic.edu.sg/PFP/pfp_eligibility.html)
- Following the release of the GCE O-Level results in January 2026, PFP-eligible students may submit their applications online via the PFP portal. More information can be found at <https://pfp.polytechnic.edu.sg/PFP/index.html>.
- **Students who are eligible for and intend to apply for the PFP must still report for Secondary 5 on 2 January 2026 (Fri)**, as being eligible for the PFP does not guarantee placement into a PFP course.
- After the release of PFP application results in late January, students who have accepted a place in the PFP are still required to attend classes up till the last Friday of January, i.e. 30 January 2026.



# Details of Admissions Exercises 4N(A) NFP



## NFP – NAFA Foundation Programme

The NFP is a one-year practice-based programme that prepares Secondary 4N(A) students to pursue a diploma in the creative arts. NFP students who successfully complete the programme will be offered a place in their chosen diploma course at NAFA.

NFP: [go.gov.sg/applynafafp](https://go.gov.sg/applynafafp)

- **Criteria for NFP:**
  - **Obtained an ELMAB3 aggregate scores of 15 points or better** (excluding CCA bonus points)
  - Applicants who score 4 and above in English Language will be required to attend an interview. Vacancies are limited, selection is competitive and based on merit.
  - In addition to meeting the educational qualification requirements, applicants must submit a portfolio, attend an admission test or audition, depending on their selected course of study. Applicants may be asked to attend an interview.
  - Also available to Secondary 4 N(A) students who have sat for GCE O-Level subjects. These students are allowed to combine their N(A) and O-Level examination results to compute their eligibility.
  - Successful applicants will be given a conditional offer of admission to the diploma programmes. Upon the successful completion of the NFP, students will be offered a place in their chosen diploma programme.

# Details of Admissions Exercises

## JIE 'N'/JIE 'E' – Joint Intake Exercise

The JIE 'N' is for students to apply for the 3-year Higher Nitec courses offered by ITE.

The JIE 'E' is for eligible<sup>1</sup> GCE N(T) students to apply for the 4-year Higher Nitec course under the Enhanced Foundation Programme.

**JIE 'N'/JIE 'E': [go.gov.sg/applyjien](https://go.gov.sg/applyjien)**

### NOTES

<sup>1</sup>Singaporean/ Singapore Permanent Resident Normal (Technical) holders with '0' or '1' GCE 'N' Level pass.



# Calculation of ELMAB3 – for those taking SBB subjects & awaiting results in Jan 2026



Students who sat for subjects in the GCE O-Level Examination (and have not received their results) may **use their school-based O-Level preliminary examination results** to compute their ELMAB3 for eligibility.

Conversion of school-based O-Level preliminary examination grades to N(A)-Level subject grades before calculating ELMAB3:

School O-Level Prelim	N(A)-Level Grade
A1, A2, B3	1
B4, C5, C6	2
D7	3
E8	4
9	5
-	6

# Calculation of Aggregate Points for eligibility in ITE (JIE 'N') courses



Computation of ITE aggregate points for full-time **3-year Higher Nitec courses**:

N(A)-Level Grade	N(T)-Level Grade	ITE Aggregate Point for JIE 'N'
1, 2, 3	A	1
4	B	2
5	C	3
6/U	D	4
-	E/U	5

# Quick overview of various options available for 4NT and 4NA



	3-year Higher Nitec	DPP	PFP	Sec 5NA	NFP (NAFA)
Applicable to	4NT and 4NA	4NA			
If ITE-EAE is confirmed	Cannot participate	No impact. Can still apply or progress if eligible for these options			
Aggregate Type	Best 4*	ELMAB3			
Gross aggregate required for eligibility	Nil	≤ 19	≤ 12	≤ 19	≤ 15
Grade requirements for specific subjects	Yes for most courses. Refer to ITE Website <a href="#">GCE 'N' Level</a>	Yes. Refer to ITE Website <a href="#">GCE 'N' Level</a>	Yes. Please refer to PFP website <a href="#">GCE N Level</a> <a href="#">PFP</a>	Yes, pass all subjects used in ELMAB3	Yes. Please refer to NAFA website <a href="#">NAFA</a>
Number of choices	12	12	5	N.A.	1

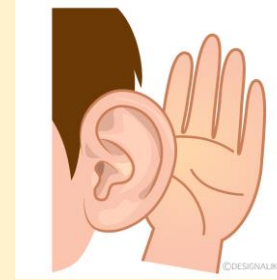
\* Based on best 4 GCE 'N' Level subjects, including pre-requisite subjects and bonus points where applicable

# Summary of Educational Pathways for Sec 4 N(A) Students

Criteria	Pathway 1	Pathway 2	Pathway 3
<b>ELMAB3 <math>\leq</math> 19</b>	<b>Direct-Entry-Scheme to Polytechnic Programme (DPP)</b>  <i>Meet the subject-specific entry requirements</i>	<b>3-year Higher Nitec</b>	<b>Progress to Sec 5N(A)</b>  <b>(Make appointment to meet VP and YH Mrs Chan with parents if considering 5NA admission by Monday 22 Dec, 2 pm)</b>
<b>ELMAB3 <math>\leq</math> 12</b>	<b>Polytechnic Foundation Programme (PFP)</b>  <i>Meet the subject-specific entry requirements</i>	<b>Direct-Entry-Scheme to Polytechnic Programme (DPP)</b>  <i>Meet the subject-specific entry requirements</i>	

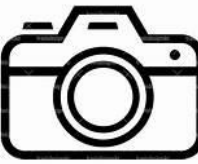


# Deadlines to note



## IMPORTANT





JUST-IN-TIME INFORMATION ON JIE APPLICATION (JAN 2026 INTAKE)

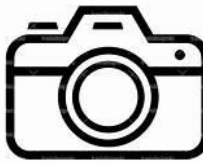
# Information For Students on Key Dates for Jan 2026 intake

1. All N(A)\* / N(T) school leavers are encouraged to submit an application during the **1<sup>st</sup> Phase (Main Phase)** between **18 Dec 2025 (2.30 p.m.) to 22 Dec 2025 (5.00 p.m.)**. Application results for the 1<sup>st</sup> Phase will be released on **26 Dec 2025 from 9.00 a.m.**
2. If you wish to appeal, please accept the course offered **before** applying in the **2<sup>nd</sup> Phase (Late Application/Appeal Phase)** between **26 Dec 2025 to 2 Jan 2026**. The application results for the 2<sup>nd</sup> Phase will be known on **6 Jan 2025 from 9.00 a.m.**
3. Unsuccessful applicants can appeal under the **3<sup>rd</sup> Phase (Final Top-up Phase)** between **9 Jan and 16 Jan 2026 and 22 Jan to 6 Feb 2026** for courses with vacancies. The application results for the 3<sup>rd</sup> Phase will be known between **12 Jan and 22 Jan 2026** and **22 Jan and 11 Feb 2026**.

\*N(A) students progressing to ITE

[Joint Intake Exercises on ITE website](#)

For further enquiries, N-Level school leavers can contact  
ITE Hotline: 1800-2222-111



# Key Dates for Jan 2026 Intake Exercise **JIE 'N' & 'E'**

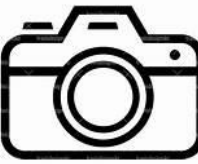
Key Activity	Period for 3-Year and 4-year Higher Nitec courses	Remarks
<b><u>1st Phase (Main Phase)</u></b>		
Application	18 Dec 2025 (2.30pm) to <b>22 Dec 2025 (5pm)</b>	Apply through the Internet at <a href="https://www.ite.edu.sg">https://www.ite.edu.sg</a> with SingPass.
Release of Results	26 Dec 2025	Check results at <a href="https://istudent.ite.edu.sg">https://istudent.ite.edu.sg</a> with web ID and password
Acceptance of Course Offer Period	26 Dec 2025 to 2 Jan 2026	Accept course offer at <a href="https://istudent.ite.edu.sg">https://istudent.ite.edu.sg</a> with web ID and password
Pre-course evaluation for 3-year Higher Nitec in Nursing course	29 Dec or 30 Dec 2025	Evaluation outcome will be released by Wed 31 Dec 2025 at 9am





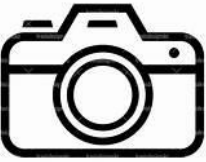
# Key Dates for Jan 2026 Intake Exercise - **JIE 'N' & 'E'**

Key Activity	Period for 3-Year and 4-year Higher Nitec courses	Remarks
<b><u>2nd Phase (Late Application/Appeal Phase)</u></b>		
Application	26 Dec 2025 to 2 Jan 2026	Apply through the Internet at <a href="https://istudent.ite.edu.sg">https://istudent.ite.edu.sg</a> with SingPass.
Release of Results	6 Jan 2026	Check results at <a href="https://istudent.ite.edu.sg">https://istudent.ite.edu.sg</a> with web ID and password
Acceptance of Course Offer Period	6 Jan 2026 to 9 Jan 2026	Accept course offer at <a href="https://istudent.ite.edu.sg">https://istudent.ite.edu.sg</a> with web ID and password
Pre-course evaluation for 3-year Higher Nitec in Nursing course	7 Jan 2026	Evaluation outcome will be released by Thu 8 Jan 2026 at 9am



# Key Dates for Jan 2026 Intake Exercise - **JIE 'N' & 'E'**

Key Activity	Period for 3-Year and 4-year Higher Nitec courses	Remarks
<b><u>3rd Phase (Final Top-up Phase)</u></b>		
Application	<b>1<sup>st</sup> Top-up Phase Application</b> - 9 Jan to 16 Jan 2026 <b>2<sup>nd</sup> Top-up Phase Application</b> - 22 Jan to 6 Feb 2026	Apply through the Internet at <a href="https://istudent.ite.edu.sg">https://istudent.ite.edu.sg</a> with SingPass.
Release of Results	<b>1<sup>st</sup> Top-up Phase</b> - 12 Jan to 22 Jan 2026 <b>2<sup>nd</sup> Top-up Phase</b> - 22 Jan to 11 Feb 2026	Check results at <a href="https://istudent.ite.edu.sg">https://istudent.ite.edu.sg</a> with web ID and password
Acceptance of Course Offer Period	<b>1<sup>st</sup> Top-up Phase</b> - 12 Jan to 22 Jan 2026 <b>2<sup>nd</sup> Top-up Phase</b> - 22 Jan to 11 Feb 2026	Accept course offer at <a href="https://istudent.ite.edu.sg">https://istudent.ite.edu.sg</a> with web ID and password
<b>Jan 2025 Intake Term Commencement Date: <u>12 Jan 2026</u></b>		



# Key dates for **JIE 'H'** for 2-yr *Higher Nitec* courses under **DPP**







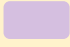
ACTIVITY	DATE	REMARKS
Main Application Period	18 Dec 2025 (2.30pm) to 22 Dec 2025 (5pm)	Apply through the Internet at <a href="https://www.ite.edu.sg">https://www.ite.edu.sg</a> with NRIC / FIN and Date of Birth. You may also apply using SingPass.
Results of Main Application and Course Acceptance	26 Dec 2025 (9am) to 2 Jan 2026	Check results at <a href="https://www.ite.edu.sg">https://www.ite.edu.sg</a> with User ID and password.
<b>Appeal Application Period</b>	26 Dec 2025 (9am) to 2 Jan 2026	Apply through the Internet at <a href="https://www.ite.edu.sg">https://www.ite.edu.sg</a> with NRIC / FIN and Date of Birth. You may also apply using SingPass.
Results of Appeal and Course Acceptance	6 Jan 2026 to 9 Jan 2026	Check results at <a href="https://www.ite.edu.sg">https://www.ite.edu.sg</a> with User ID and password.
College Reporting & Term Commencement (for Main and Appeal Application phases)	<b>Mon 12 Jan 2026</b>	

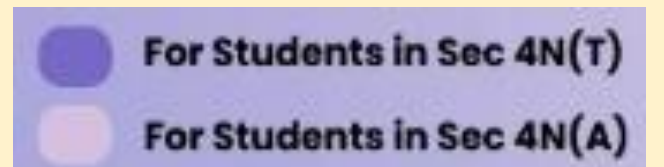


# Key dates for JIE 'H' for 2-yr Higher Nitec courses under DPP

ACTIVITY	DATE	REMARKS
Final Application Period	14 Jan (tentative) to 19 Jan 2026	Apply through the Internet at <a href="https://www.ite.edu.sg">https://www.ite.edu.sg</a> with NRIC / FIN and Date of Birth. You may also apply using SingPass.
Results of Final Application and Course Acceptance	21 Jan 2026 (9am) to 26 Jan 2026	Check results at <a href="https://www.ite.edu.sg">https://www.ite.edu.sg</a> with User ID and password.
College Reporting (for final application phase)	26 Jan 2026	
Final Appeal Period	21 Jan 2026 to 2 Feb 2026	Apply through the Internet at <a href="https://www.ite.edu.sg">https://www.ite.edu.sg</a> with NRIC / FIN and Date of Birth. You may also apply using SingPass.
Results of Final Appeal and Course Acceptance	10 Feb 2026 (5pm)	<b>DPP intake will close on 10 Feb 2026 (5pm).</b>

# Application Period

Application Period	Dec 2025	Jan 2026
Admissions Exercises	JIE 'N'   JIE 'E'  DPP (1 <sup>st</sup> window of applications)  NFP 	PFP  DPP (2 <sup>nd</sup> window of applications) 



# Key Pointers for Students on ITE's Joint Intake Exercise (JIE)

ALL students in N(T) and N(A) students (who are not progressing to 5N(A) or repeating 4N(A)) are eligible for JIE.  
Those who were unsuccessful in EAE are also eligible for JIE.

Apply in the 1st JIE main phase in December.

Use all 12 JIE choices wisely, as competition for 3-year Higher Nitec courses is keen!

Do consult your teachers / ECG counsellors to help you make your choices!

Do use the Last Aggregate Score (LAS) published in ITE's admission portal to help you make your course choices.

You are eligible for Enhanced Foundation Programme (EFP) if you receive an invitation letter to the EFP addressed to you and a copy of invitation letter for your parent/guardian.

If you are eligible for EFP, make sure you apply for both the 4-Year and 3-Year Higher Nitec Course.

The EFP helps to build the necessary literacy and numeracy foundations!

If you are counter-offered a course, accept it first to secure a place in ITE, before appealing for another course you may be more interested in!

## STEP-BY-STEP INFORMATION FOR JIE APPLICATION

# Online Application for

## 3-Year Higher Nitec Courses

## 4-year Higher Nitec Course with EFP

(for N(T) students with 0, 1 “N” pass)

1. Go to <https://www.ite.edu.sg>.

2. Click



icon.

3. Under **JIE ‘N’**, click **Apply Now** icon to link to the application website

Under **JIE ‘E’**, click **Apply Now** icon to link to the application website

4. At the application website:

- a) Use your Singpass to access the application portal.
- b) Upon completion of application, applicants will receive their web ID and password. **(Remember this web ID and Password)**



## STEP-BY-STEP INFORMATION FOR JIE APPLICATION

# Checking of Posting Results/Accept Course Offer

**3-Year Higher Nitec Courses****4-year Higher Nitec Course with EFP**

(for N(T) students with 0, 1 “N” pass)

1. Go to <https://istudent.ite.edu.sg>.
2. Enter **web ID** and **password**.
3. Click '**Self-Service**' followed by '**Student Admission**' followed by '**View Application Results**' to view the application results and to accept course offer.

The above steps applies to all phases (refer to Slide 19 for dates).  
For more details, please refer to ITE website.

## RESOURCES FOR STUDENTS

# Additional Information For Students

Should you require further advice or assistance in your applications or future plans, please contact your teachers and/or ECG Counsellor.


For further inquiries, you may refer to the following hotlines and links for more information and advice on further education:

Institute of Technical Education (ITE)	
ITE Hotline (for ITE admissions and courses)	1800 2222 111 <a href="mailto:training@ite.edu.sg">training@ite.edu.sg</a>
ECG Centre @ MOE	
e-Appointment link	<a href="https://go.gov.sg/moe-ecg-centre">https://go.gov.sg/moe-ecg-centre</a>

## RESOURCES FOR STUDENTS

# Additional Information For Students

The information listed in the table below will help you to make an informed decision on which choice of courses you could consider applying at ITE.

S/N	Information	Attachment/Link
1	ITE Factsheet 2025	 2025 JIEN Factsheet
2	ITE Course Booklet 2026	<a href="#">ITE-Course-Booklet-2025.pdf</a>
3	Information on Progression Opportunities (From <i>Nitec</i> Courses to <i>Higher Nitec</i> and Technical diplomas)	<a href="https://www.ite.edu.sg/current-full-time-students/progression/">https://www.ite.edu.sg/current-full-time-students/progression/</a>
4	Information on Progression Opportunities (from <i>Higher Nitec</i> courses to diploma courses)	<a href="https://www.ite.edu.sg/secondary-school-students/admissions/academic-progression/academic-progression-from-full-time-higher-nitec/">https://www.ite.edu.sg/secondary-school-students/admissions/academic-progression/academic-progression-from-full-time-higher-nitec/</a>

# Additional resources to help you make informed decisions



## About Discover On My Way:

Discover your **education and career interests** and **chart your personal and professional future** with Discover On My Way! **Explore** different careers, **connect** with industry professionals and peers, and **get firsthand exposure** at various job roles. *Let's get you on your way to Discover-ing!*

What to study?  
What career to pursue?

## Still figuring out your future?

Join programmes organised by NYC and our partners to meet professionals from various industries & youth on the same journey as you.



Learning Journey to  
\*SCAPE & ChaPanda



SEAcret Gatherings




Industry Connects With Grab SG



<https://discover.nyc.gov.sg/omw>

# Reaching out for support is a sign of strength

If you have questions about your options or are not coping well, you can reach out to trusted adults such as a parent/guardian, teacher, School Counsellor or ECG Counsellor. You can also talk to a trusted friend.



*Who can we  
go to for ECG  
advice?*

Make an appointment to speak with  
your ECG Counsellor in school

**OR**

Make an ECG counselling  
appointment via the  
ECG Centre @ MOE

<https://go.gov.sg/moe-ecg-centre>



# 2025 N-Level ECG Counselling Support

## 1. In school – for Damaians only

- 18 Dec (Thurs), 3.30pm to 4.30pm
- 19 Dec (Fri), 8am to 12pm & 1pm to 4pm

Venue : Student Lounge (beside school hall)



Mr Edwin Khong  
ECG Counsellor

## 2. Online/In school– for Damaians only

- 22 Dec (Monday) 8am to 12pm & 1pm to 3pm  
(ITE Application closes at 5pm)



# Online ECG Counselling Session for 22 Dec (Monday)

8am to 12pm & 1pm to 3pm

**Remember (ITE Application closes at 5pm)**



[https://go.gov.sg/dssecgappointment  
booking](https://go.gov.sg/dssecgappointmentbooking)

Go to

[https://go.gov.sg/dssecgcap  
pointmentbooking](https://go.gov.sg/dssecgcap<br/>pointmentbooking)


Check your email inbox. ECGC will send you a confirmation email on your booking appointment.



Wishing you  
All the Best



As you embark on this  
new beginning,  
may you be filled with  
optimism, courage, and  
a sense of adventure



**DAMAI  
SECONDARY SCHOOL  
ALUMNI**



**BE AN ALUMNI**

- An opportunity to stay in touch and contribute to the school
- Share your learning experiences (higher learning institutions) to inspire your juniors

