

INSTRUCTIONS ON APPEAL FOR ADMISSION OR TRANSFER (FOR JIE 'H' INTAKE EXERCISE)

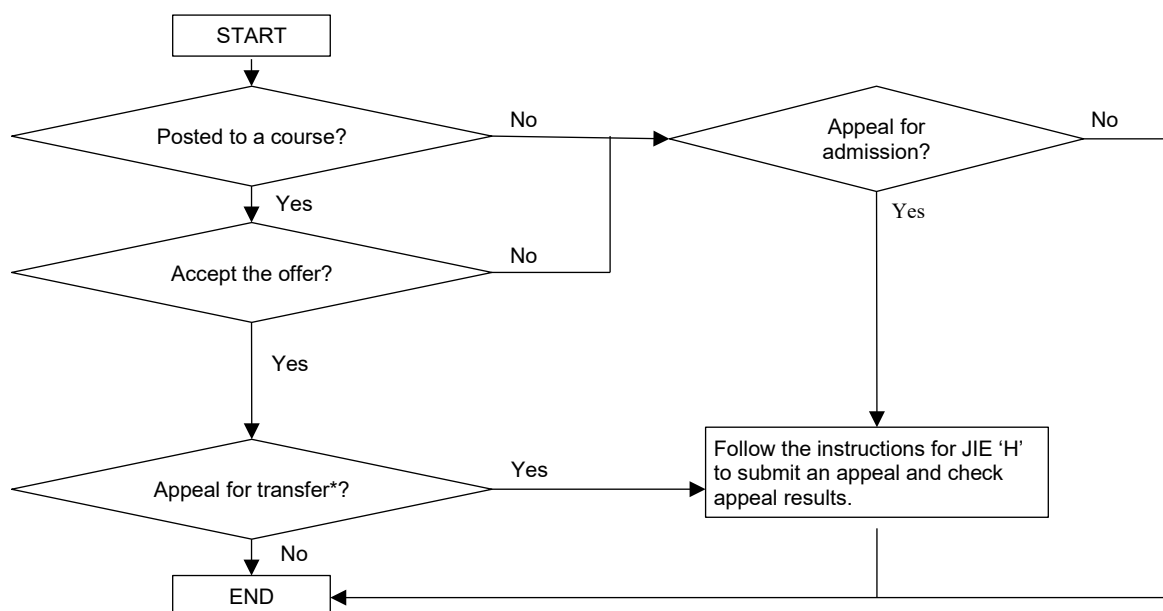
If you are offered a course, you are advised to accept it through the Internet before appealing for a change of course or College. Otherwise, your place will be offered to those who are eligible and have appealed for the course. To appeal for transfer to another course, you should accept the course offered and submit another application via the Internet. If you require course advising, you may make an appointment online with one of our ECG Counsellors via <https://for.edu.sg/ecg>.

If you have applied and are **not offered a course**, you may submit an appeal for admission through the Internet for the courses you are eligible to appeal for.

You can submit your appeal between **Fri 26 Dec 2025 and Fri 2 Jan 2026**. Please note that you must meet the minimum entry requirements for the course(s) before you can submit your appeal. **While all eligible appeals will be given due consideration, meeting the minimum entry requirements does not guarantee you a place in the course, as admission is also subject to available vacancies in open competition.**

If you encounter difficulties submitting your appeal for a full-time course over the Internet, please call or email to any of the Customer & Visitor Centre of ITE Colleges for assistance within the application/appeal period.

Procedures for appeal are shown in the following flowchart:



* For students appealing for transfer, only the first choice will be considered.

Guide to Internet Appeal for JIE 'H' Full-Time 2-Year Higher Nitec Courses

Please follow the instructions below carefully:

- **Microsoft Edge and Google Chrome** are recommended. Mobile devices are not recommended.
- Go to <https://www.ite.edu.sg> and click on the '**Apply for ITE Courses**' link to view the list of intake exercises.
- Click on '**Direct Entry Scheme to Polytechnic Programme (DPP)**' under '**Full-Time 2-Year Higher Nitec with 10 Weeks Preparatory Courses (Jan 2026 Intake)**'.
- Click '**Apply Now**' to link you to the application website.

Step 1

- Log in using your Singpass. Please visit the Singpass website at <https://www.singpass.gov.sg> for information on Singpass application and password reset. For further assistance, please refer to the Singpass FAQ page at <https://go.gov.sg/singpass-faq>, call the Singpass helpdesk at +65 6335 3533 or email support@singpass.gov.sg.

Step 2

- Read instructions on the screen.
- You must pass the colour vision test if you wish to apply for the **Electrical Engineering; Electronics Engineering; and Mechatronics Engineering** courses. To find out if you are free from colour appreciation deficiency, go to <https://for.edu.sg/cbt> to do a self-check.

Step 3

- **Enter your choices in order of preference.** Check through your choices.
- After that, click '**SUBMIT**'.

Step 4

- Click '**YES – SUBMIT**' to confirm and submit your application.

Step 5

- You will see on the screen a verification slip with the choices you have made and your web ID and password. Click '**PRINT**' at the bottom of the page to **print a copy of the verification slip for your reference**. You will need your web ID and password to view the result of your application.

You are allowed to make changes to your application over the Internet. Please follow the instructions in the verification slip for making changes to your application over the Internet.

Result of Appeal

You are to check the result of your appeal at <https://student.ite.edu.sg> using the given web ID and password between **Tue 6 Jan 2026 (9am) and Fri 9 Jan 2026**. Please do not call or write to ITE about your application before the results are released.