



DMA Guide for Parents/Guardians:

Option B

Table of Contents

Introduction 3

Section 1: What is Jamf School..... 4

Section 2: After-School DMA Parent Options – Option B..... 7

Section 3: DMA Features 8

 3.1 Web Content Filtering 8

 3.2 Application Control..... 8

Section 4: Installation of Applications 9

Introduction

In today's digital age, Personal Learning Devices (PLDs) have become an integral part of education. While these devices offer immense opportunities for learning and growth, it is crucial to ensure they are used safely and responsibly during school hours, while also allowing for more freedom outside of school. This is where our Device Management Application (DMA) comes in.

Option B of our DMA is designed to provide a structured digital environment during school hours while offering more flexibility outside of school. It features:

1. Adherence to school-set rules during school hours (which are defined by the school), ensuring your child's/ward's focus on learning.
2. No restrictions after school hours, allowing for more independent and flexible device use.
3. No enforced sleep hours, giving you and your child/ward the freedom to manage rest times as you see fit.

This guide will walk you through the features of Option B, to help you understand how it works to create a balanced digital environment that combines school-time structure with after school flexibility.

By choosing this option, you are taking an important step in supporting your child's/ward's educational needs during school hours while also fostering their ability to manage their own device use responsibly outside of school.

Section 1: What is Jamf School

Jamf School is a purpose-built Apple Mobile Device Management (MDM) for schools. As of 31 December 2023, the majority of the top universities and school districts in the United States of America use Jamf to manage their learning devices.

Who uses Jamf?

10 of the **Top 16**

Best school districts in the U.S. as ranked by Niche

9 of the **Top 10**

Largest U.S. school districts as ranked by Niche

10 of the **Top 10**

Best global universities as ranked by US News and World Report

11 of the **Top 11**

Best U.S. national universities as ranked by US News and World Report

*As of December 31, 2023

Jamf employs a series of controls to safeguard the users' data.

Cloud Security

Security is built in to all Jamf products. We employ numerous industry-leading security controls to safeguard your data including:



Aurora RDS encryption

Jamf Cloud uses an external, third-party SSL certificate for the Jamf Pro web app. In addition, Jamf Cloud uses TLS 1.2 and AES-256 bit encryption for data at rest and in transit between a managed endpoint and the Jamf Pro server.



Logical Data Separation

Data is kept logically separate on various layers throughout the Jamf Cloud infrastructure. Only processes and threads such as queries within an authenticated organization's context may access that organization's data. This restriction applies to all data and processes/threads, both in memory and on disk.



Database Backups & Recovery

Databases are continuously replicated to another server in a different data center. A snapshot of each database is taken every 24 hours and may be used to restore data if a critical event occurs. Jamf Cloud uses application and database servers in multiple data centers to provide high availability and recovery in case of service outage.



Dedicated Security Operations Team

We have a dedicated global team of engineers to monitor cloud availability and ensure the highest uptime is achieved for our customers.

Jamf is committed to safeguard personal information, maintaining compliance with privacy laws, and enhancing transparency through updates to its Privacy Notice, including clarification on third-party data processing.

Jamf's Approach to Privacy



Protecting privacy is a core responsibility for every organization, and it is best attained when it is an integral part of the organizations' business operations. Privacy must be considered as part of strategic decision-making, business operations and application development; it should not be an afterthought.

At Jamf, we understand the importance of data privacy and work to ensure data protection is considered in every decision we make.

Jamf has established a privacy approach that is designed to direct our actions and help us honor our commitments to protect your data. The objectives of this program are based on three principles:

- ✓ **Compliance** - Achieve and maintain compliance with privacy laws and regulations.
- ✓ **Trust** - Build and maintain the trust of our customers, partners, and employees.
- ✓ **Culture** - Foster an organization-wide culture of "Privacy By Design."

Jamf is compliant with multiple certifications and is a member of several organisations that focus on cybersecurity and governance.

Compliance offerings



SOC 2



[ISO 27001](#)



[ISO 27701](#)



[Cloud Security Alliance](#)



[Data Privacy Framework Program](#)



[Cyber Essentials](#)



[StateRAMP Ready status](#)

Memberships



OWASP



FBI InfraGard



ISACA



[CIS Benchmark](#)

Section 2: After-School DMA Parent Options – Option B

This guide is for parents/guardians who have selected **Option B** for your child's/ward's PLD.

This option is for parents/guardians who do not want your child's/ward's use of the PLD after school hours to be regulated by the DMA at all. This essentially allows your child/ward unrestricted access to the internet and applications. All browsing activities on the PLD will not be logged. It is important to note that by not logging browsing activities, the DMA will not be able to provide any web content filtering for your child/ward.

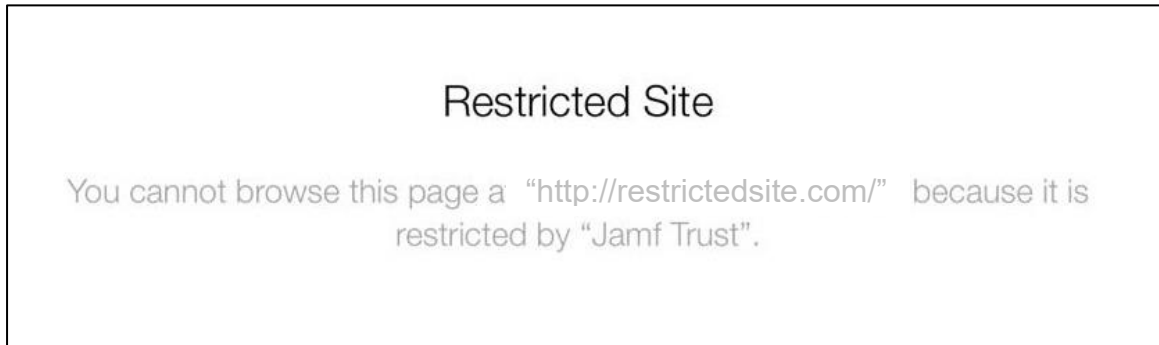
Under Option B, there will also not be any sleep hours set on the PLD, which allows your child/ward unrestricted access throughout the night. Your child/ward will be also able to install any applications from the App Store after school hours. These applications will only be accessible for your child/ward after school hours.

Option B	
Protects students from objectionable content	<p>Web content filtering during school hours includes, but is not limited to, the following categories:</p> <ul style="list-style-type: none"> • Violent/extremist content • Sexual/pornographic content • Gambling-related content <p>No content filtering at all after school hours.</p>
Reduce distractions from learning through control of applications	<ol style="list-style-type: none"> 1. Parents/Guardians and/or students will be able to install additional applications after school hours. 2. Applications installed by parents/guardians and/or students after school hours will not be accessible during school hours.
Limit screen time	No screen time restrictions after school hours.

Section 3: DMA Features

3.1 Web Content Filtering

During school hours, your child's/ward's PLD will be protected by **Jamf Safe Internet**. If your child/ward visits a restricted site, the following block screen will appear.



There will be no web content filtering in place **after school hours**.

3.2 Application Control

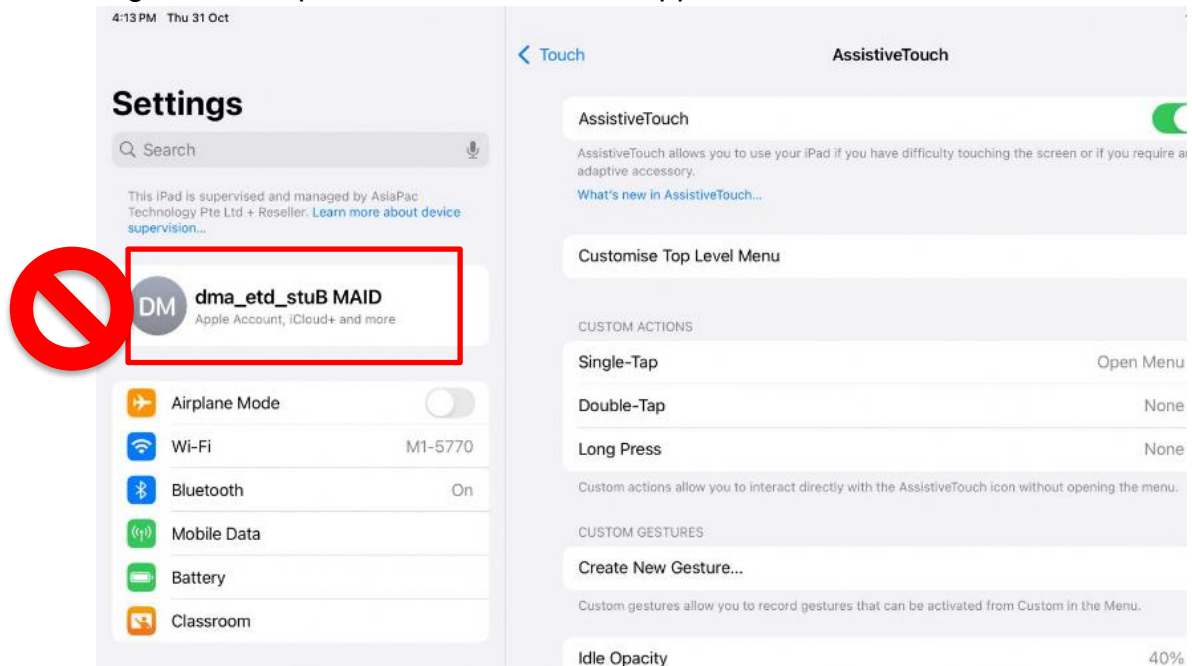
Your child/ward will not have access to the App Store **during school hours**.

The App Store will be available **after school hours** and your child/ward can access it to install any application on the App Store. Applications installed by your child/ward will not be visible **during school hours**. Refer to Section 4 for more information on installation of applications.

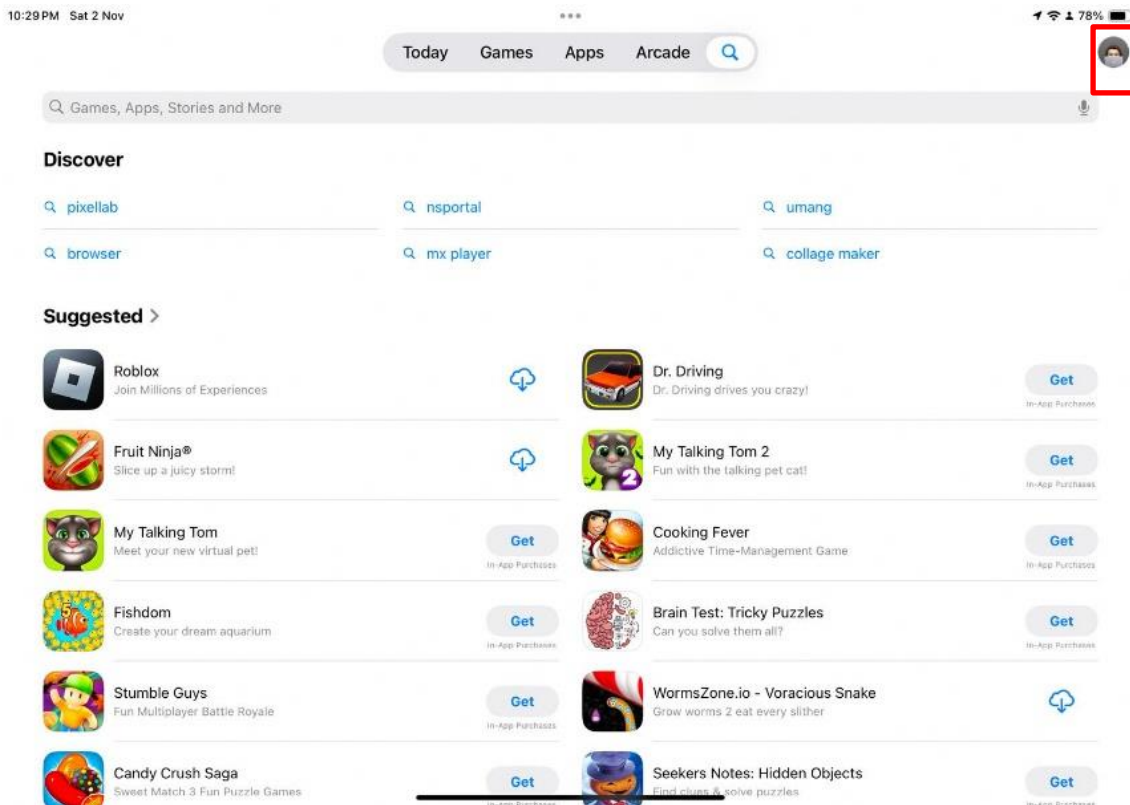
Section 4: Installation of Applications

For App Store access, your child/ward can sign in with their Apple Account without needing to sign out of the School Managed Apple ID. This allows them to download applications while preserving iCloud functionality, ensuring that the 200GB data backup provided by the School Managed Apple ID remains active and unaffected.

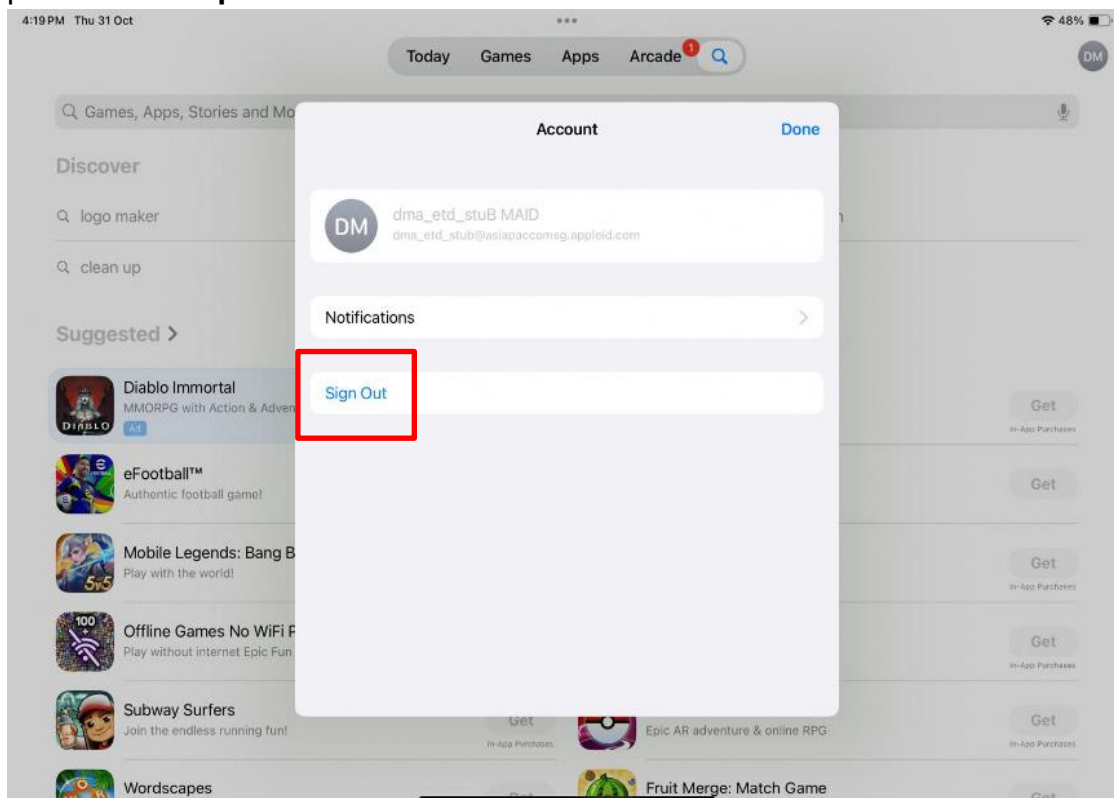
Reminder: Do not sign out of your School Managed Apple ID in Settings. Instead, you will sign in with a personal account in the App Store.

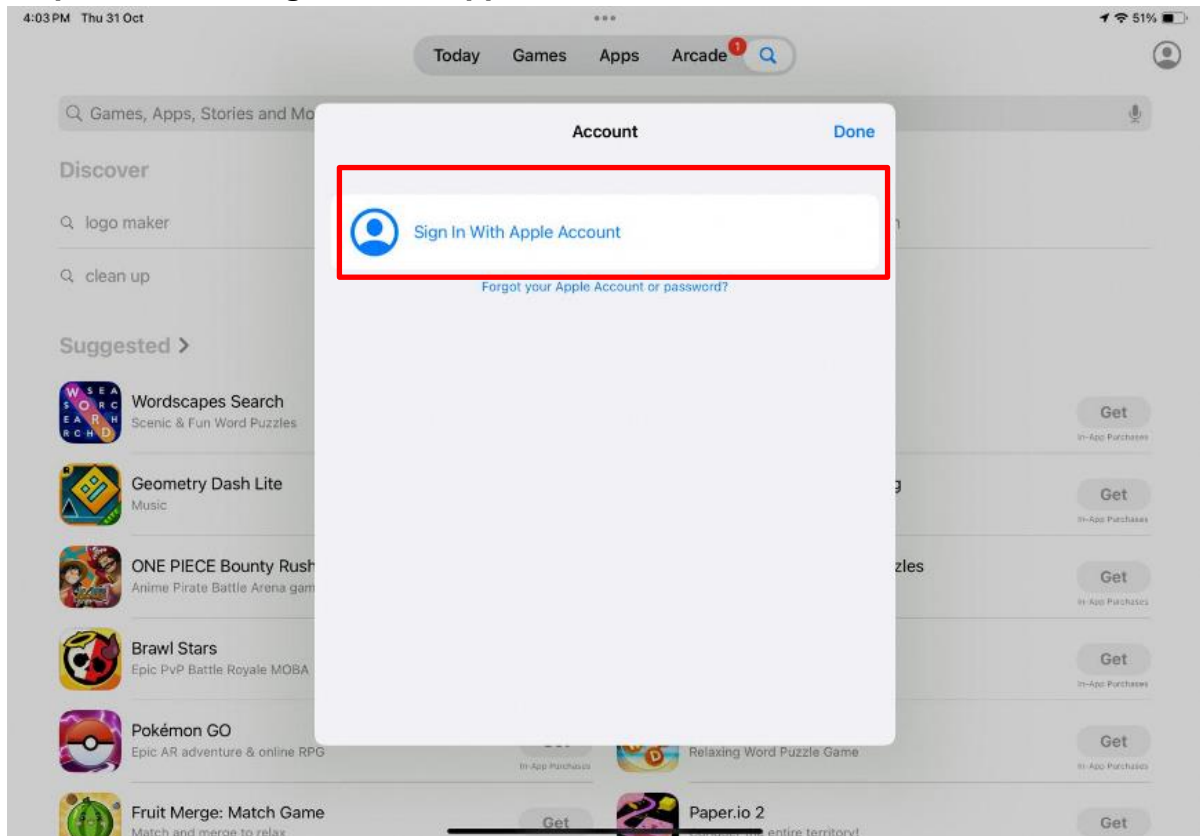
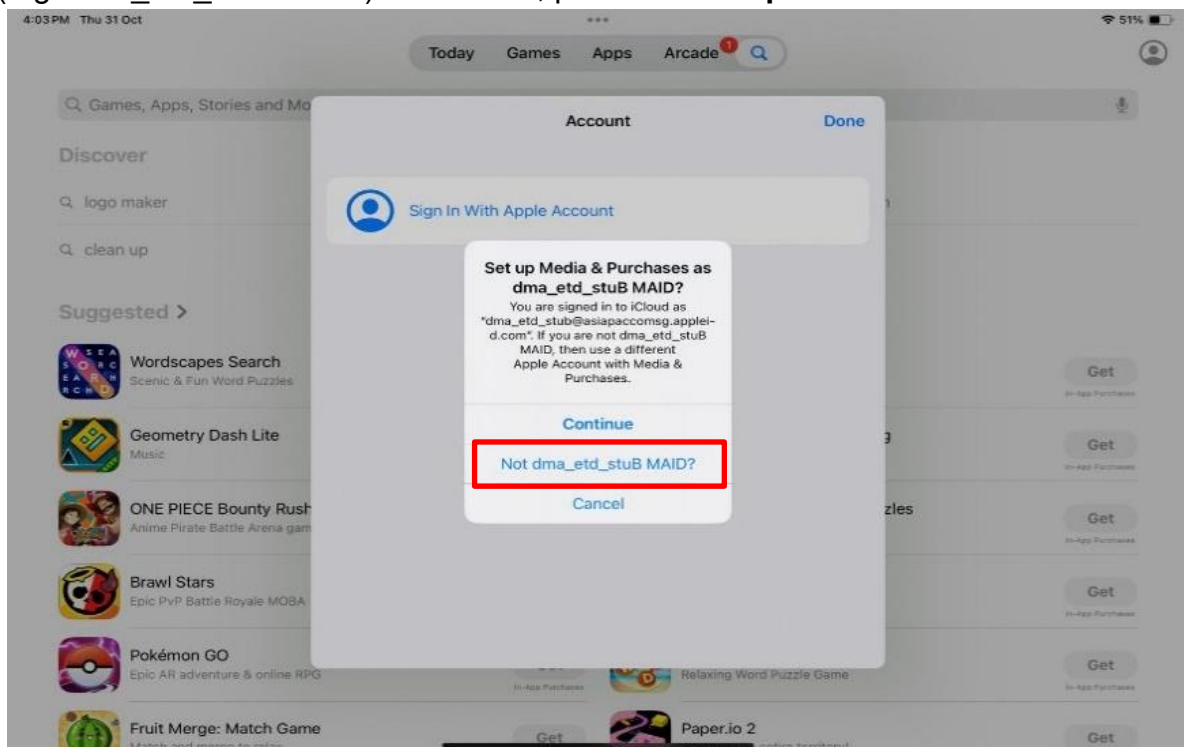


Step 1: In App Store, tap on the icon at the top right corner.

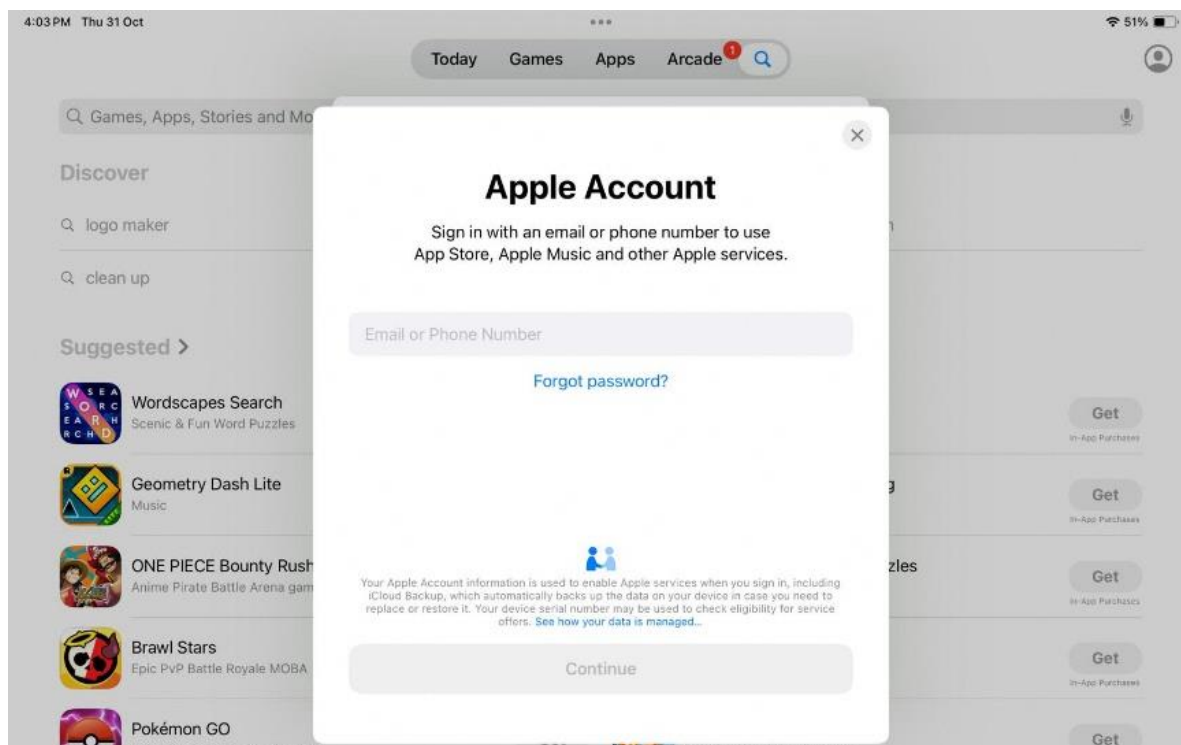


Step 2: If there is an existing account, tap on “**Sign out**” to sign out of the current School Managed Apple ID from the App Store (and not from Settings). Otherwise, proceed to **Step 3**.

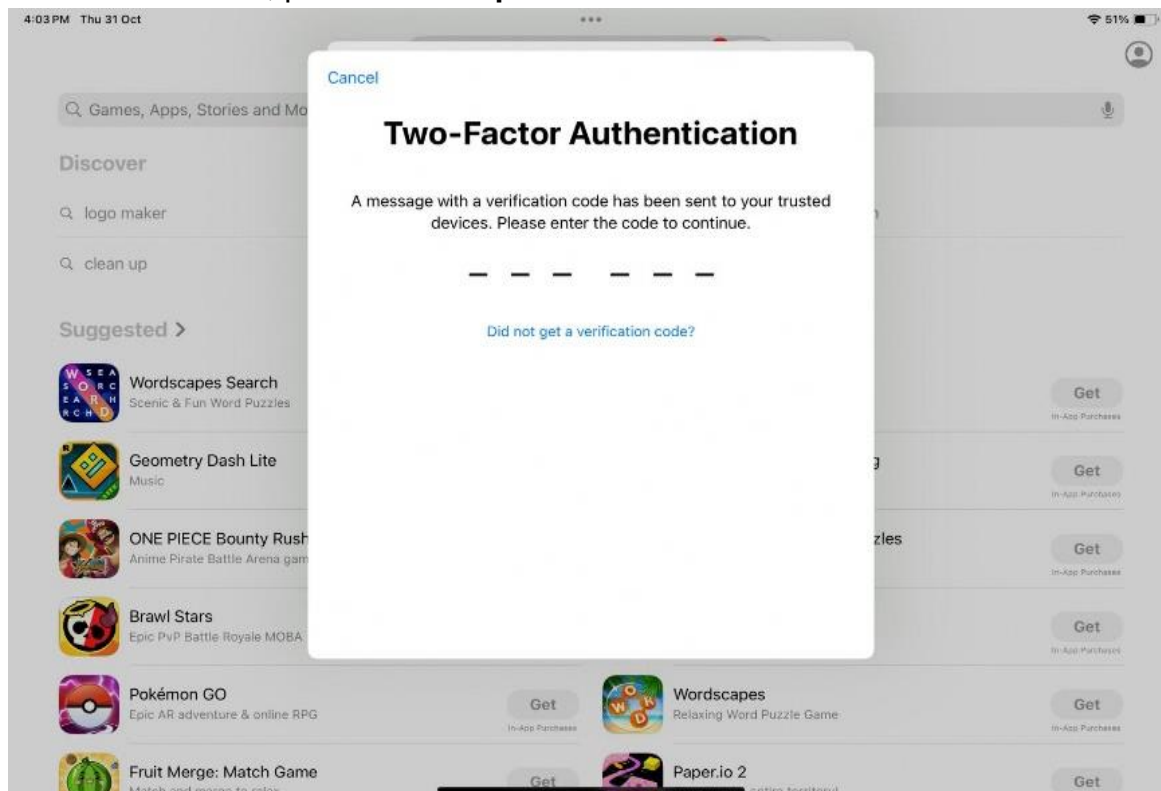


Step 3: Click on “Sign in with Apple Account”.**Step 4:** If the prompt shown in the image below appears, click on “Not this account” (e.g. dma_etd_stuB MAID). Otherwise, proceed to **Step 5**.

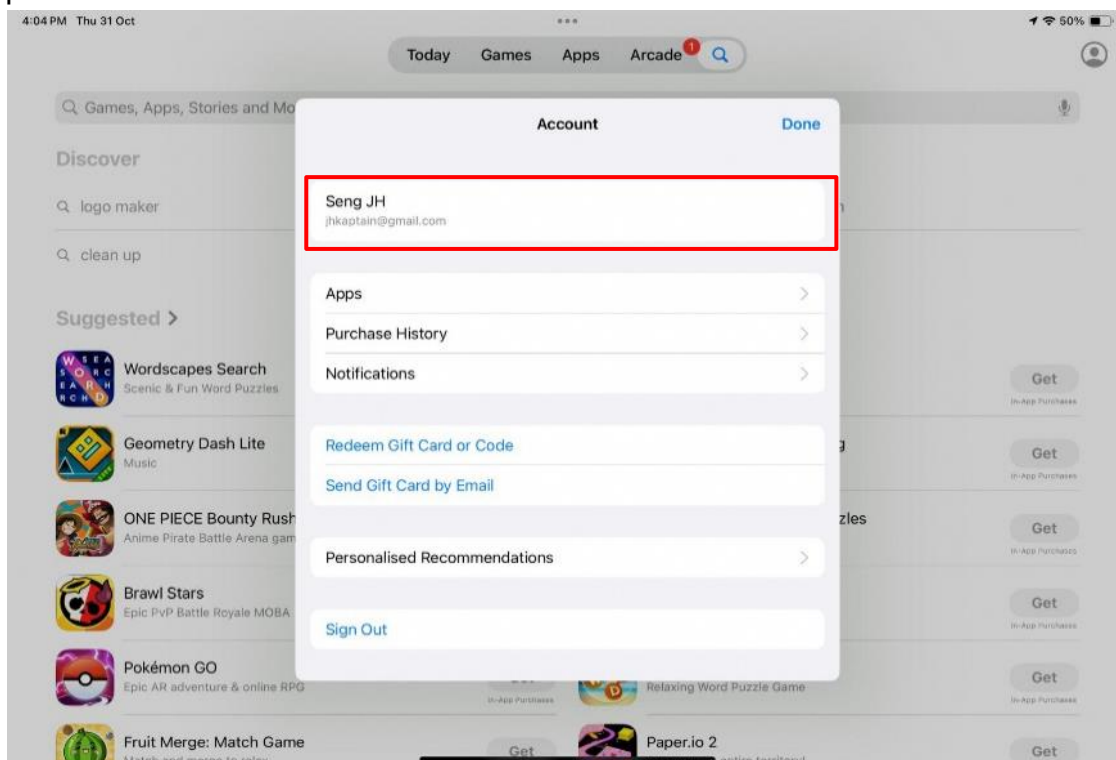
Step 5: Login with a personal Apple Account and password that will be used to download applications. This can be either your Apple Account or your child's/ward's Apple Account. This **cannot be** your child's/ward's School Managed Apple ID nor Student iCON account.



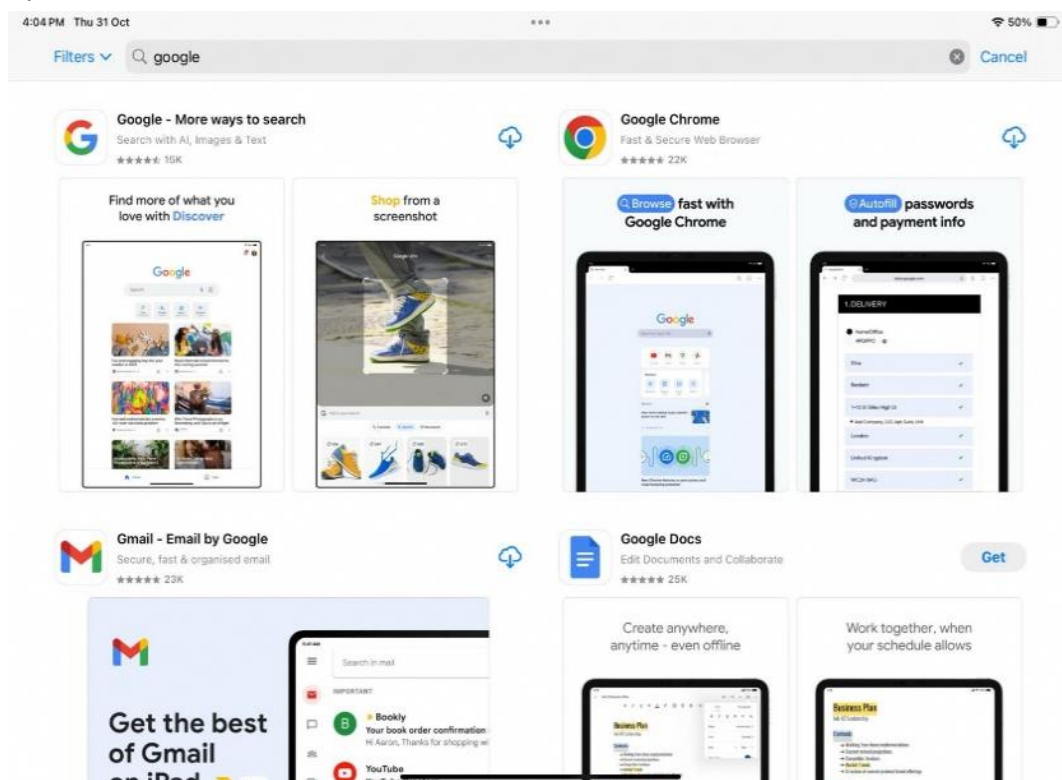
Step 6: Enter 2FA verification code if you have enabled 2FA feature for the Apple Account. Otherwise, proceed to **Step 7**.



Step 7: You will see that your child/ward has logged in successfully with the personal Apple Account.



Step 8: Browse the App Store for apps (e.g. Google Chrome) to install in your child's/ward's iPad.



Note: These apps will only be visible after school hours.

It is important to be aware that spending an excessive amount of time using devices is unhealthy and that it is important to monitor your child's/ward's device usage after school hours to ensure they maintain a healthy balance of age-appropriate activities. You can refer to the Parenting for Wellness toolbox (<https://go.gov.sg/pfw-toolbox-for-parents>) for strategies and tips.

We have come to the end of the Guide. If you have other questions, including changing of after-school DMA parent options, please contact the respective school's DMA Admin.