

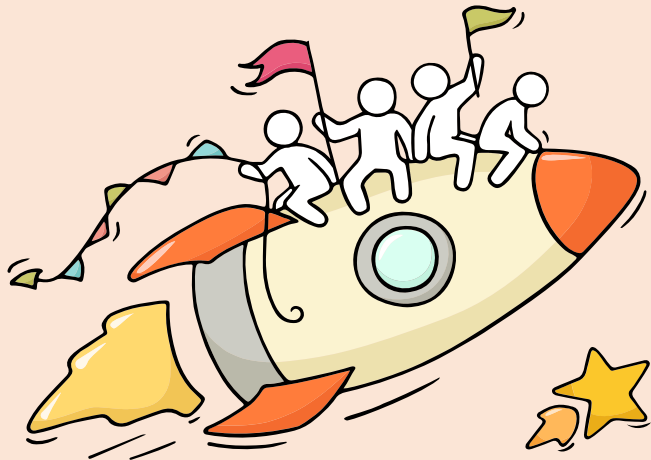
# Welcome Back!

Briefing Slides for Release of 2025 GCE O-Level Results



# Dear students,

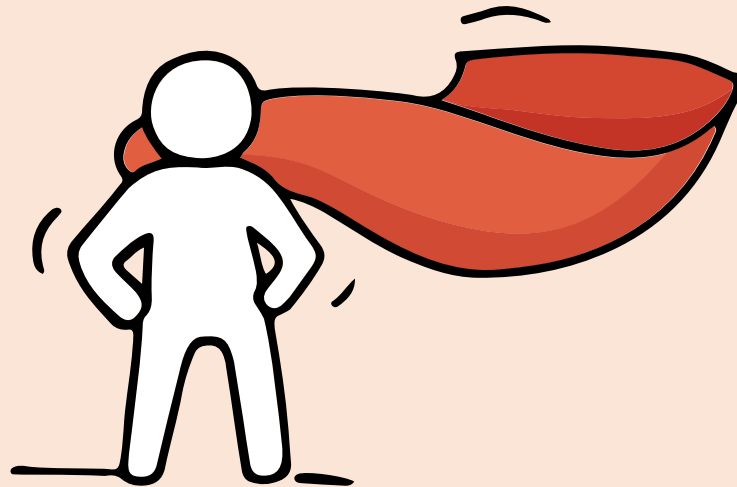
You have worked hard to reach this stage. Let's celebrate your efforts!



*Finally, we are going  
to get our results!*



Remember that while **everyone's**  
**educational journey is different,**  
**we can each have a fulfilling outcome!**



# Resources to support you as you receive your results

Receiving your results and making decisions about your post-secondary pathways can be exciting to some, but stressful to others.

Scan this QR code for an infographic with some helpful resources to support you.



<https://go.gov.sg/olevelstudentresource>



# Thinking about Your Next Step?

Consider these questions...

Who am I?



In the infographic, you can find resources which can help you make informed decisions.

## PLANNING YOUR NEXT STEP

These resources will help you chart your path ahead:



• What's Next Brochure

<https://go.gov.sg/whats-next-olevel>



• Contact the ECG Centre @ MOE

<https://go.gov.sg/moe-ecg-centre>



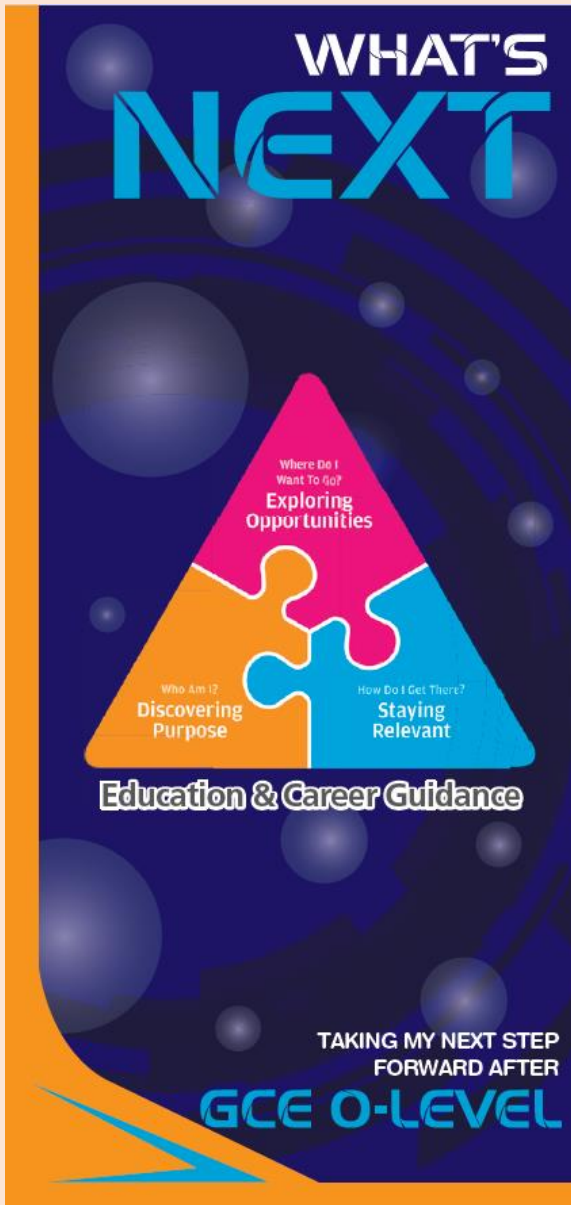
• MySkillsFuture Student Portal

<https://go.gov.sg/MySFSec>



• Chat with your school's ECG Counsellor

# Resources to help you make informed decisions



## PLANNING YOUR NEXT STEP

These resources will help you chart your path ahead:



- What's Next Brochure

<https://go.gov.sg/whats-next-olevel>



- Contact the ECG Centre @ MOE

<https://go.gov.sg/moe-ecg-centre>



- MySkillsFuture Student Portal

<https://go.gov.sg/MySFSec>



- Chat with your school's ECG Counsellor



## MySkillsFuture Student Portal

Use the information and tools to explore various education and career pathways and take charge of your future.

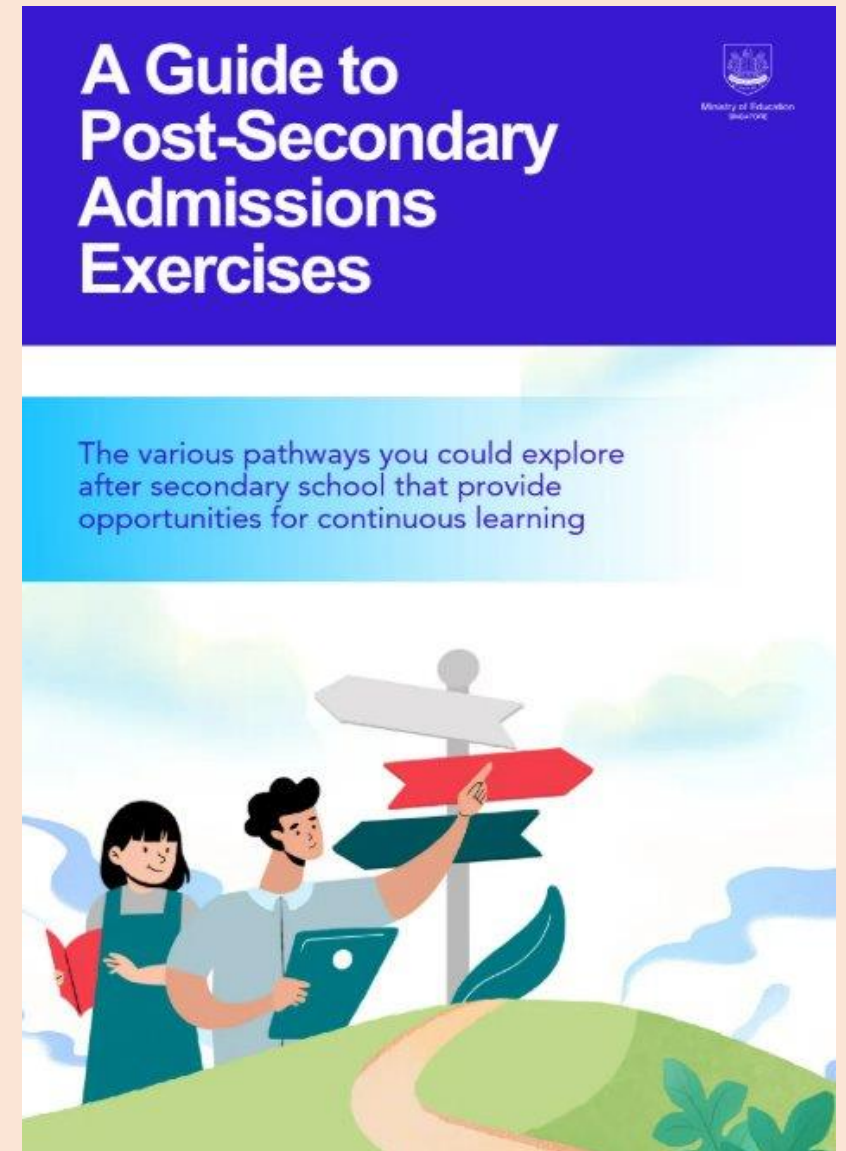


# Details of Admissions Exercises

You can find the details of the various admissions exercises from the **Post-Secondary Admissions Exercises** booklet that can be downloaded from:

<https://www.moe.gov.sg/post-secondary/admissions>

- Joint Admissions Exercise (JAE)
- Joint Intake Exercise (JIE) 'O'
- Nanyang Academy of Fine Arts (NAFA)
- LASALLE College of the Arts (LASALLE)



# Resources to help students make informed decisions

**Learn more about the  
post-secondary education institutions**



<https://moe.gov.sg/post-secondary/overview>



# Concerned About Your Next Steps?

Stop

- Calm yourself down. Take a few deep breaths.

Think

- Think through the different options that are available for you.
- Remember that the O-Level examination is not the end point and is only one part of your life journey.

Do

- Have conversations with trusted adults who know you well to advise and guide you (parents, teachers, ECG Counsellor).
- Decide and act based on your options.

## Managing your emotions

**When you receive your results, you may experience a range of emotions.**

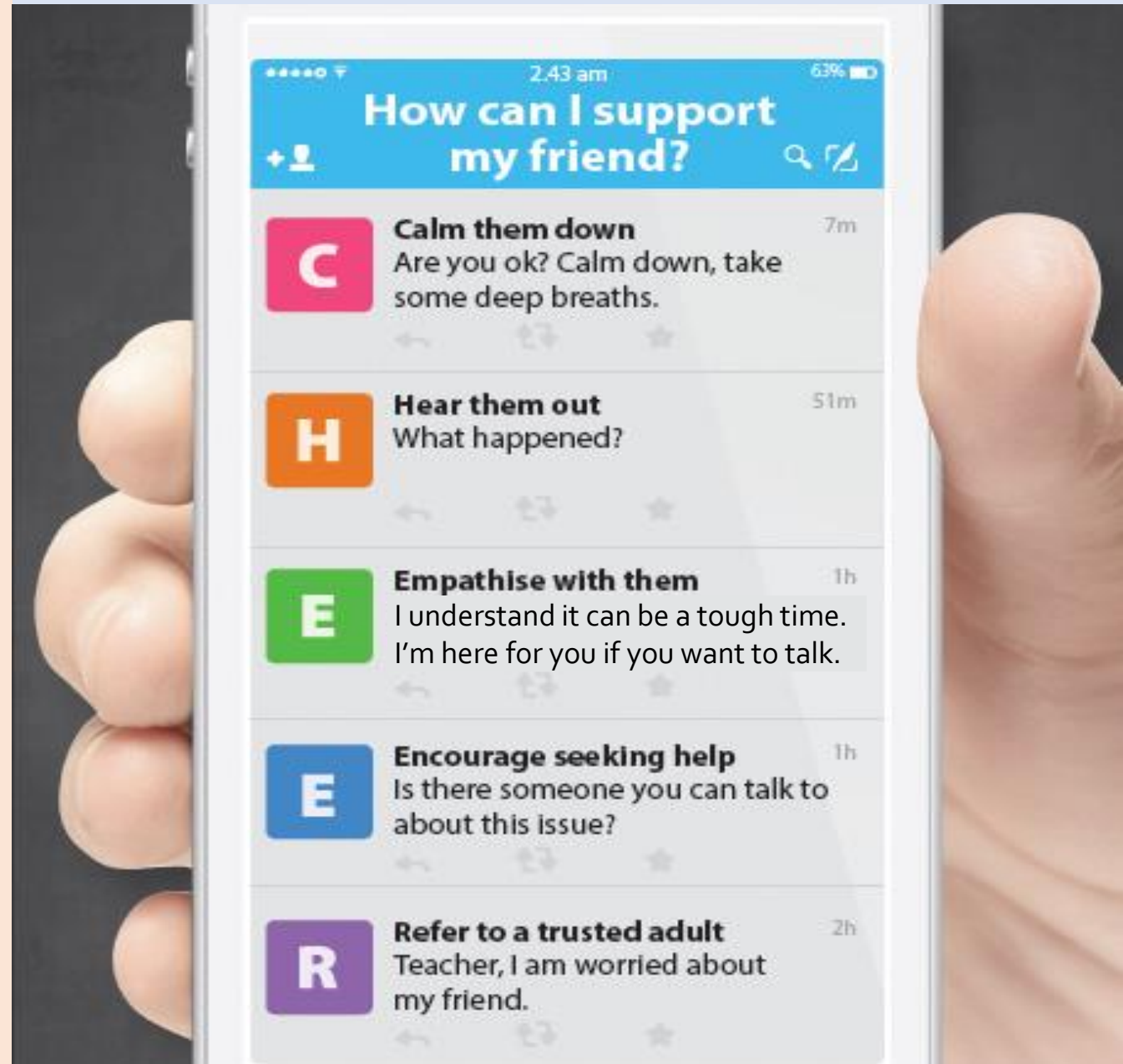
**Managing these emotions well will allow you to stay calm and make rational decisions.**

# Supporting Your Friend

- We may each experience different emotions upon receiving the results.
- You can share your friends' joy by congratulating them.
- If your friends appear to be disappointed with their results, encourage them.
- Alert a teacher if you are worried for them.



Keep a lookout for your friends in distress. You can support them in the following ways:



**Having difficult emotions during a stressful and uncertain period is normal. Keep a look out for some of these signs:**

**D  
I  
S  
T  
R  
E  
S  
S**

Deliberately avoiding others

Increased irritability, restlessness, agitation, stress and anxiety

Sending or posting moody messages on social media

Talking about death or dying

Reacting differently or gradually losing interest in things they used to like

Eating more than usual or having a much reduced appetite

Sleep pattern changes with difficulty falling asleep or oversleeping

Slowing down of energy levels

*How can we support one another?*



If you notice any of these signs in yourself or your friends, **have a chat with your School Counsellor or teacher,**

Or contact SOS 24-hour hotline at **1767** or SOS 24-hour CareText Whatsapp at **91511767**  
For cyber wellness related matters, call Help123 at **1800-612-3123\*** or email **hello@help123.sg**

\*available only from Mon to Fri (excluding Public Holidays), from 9am - 6pm.



© 2023 Guidance Branch, Student Development Curriculum Division (SDCD), Ministry of Education, Singapore. No part of this final product may be reproduced or transmitted in any form or by any means, electronic or mechanical, including photocopy, recording or any other information storage and retrieval system, without written permission from SDCCD, MOE.

# Support is readily available for you.

There are other hotlines and chats available if you are more comfortable seeking help using these platforms.

**SOS** provides round-the-clock emotional support for those in distress, thinking of suicide or affected by suicide.

Call: **1767**

(24-hour helpline)

WhatsApp: **9151 1767**

(24-hour Care Text)

**Carey** is an online platform by Care Corner that provides free mental health check-ins with mental health professionals. Find out more at: <https://carey.carecorner.org.sg/>

**Community Health Assessment Team (CHAT)** provides personalised and confidential mental health checks and consultation for youths. To speak with a youth support worker, you can:

Visit: **CHAT Hub at \*Scape, 2 Orchard Link, #04-07**

Call: **6493 6500 / 6501**

Email: [chat@mentalhealth.sg](mailto:chat@mentalhealth.sg)

**ec2** is an e-Counselling Centre where you can talk to a trained counsellor about the issues you are facing, right where you are.

Chat with a counsellor at: [www.ec2.sg](http://www.ec2.sg)

*Monday – Friday (Excluding Public*

*Holidays): 10am – 12pm & 2pm – 5pm*

**Mindline** is Singapore's national mental health helpline and textline service. The service is manned by trained counsellors who are ready to listen and support you.

Call: **1771**

(24-hour helpline)

WhatsApp: **6669 1771**

(24-Hour messaging service via WhatsApp)

**TOUCHline** is a helpline to provide youths with emotional support and practical advice.

Call: **1800 377 2252**

*Monday- Friday (Excluding Public*

*Holidays): 9am – 6pm*



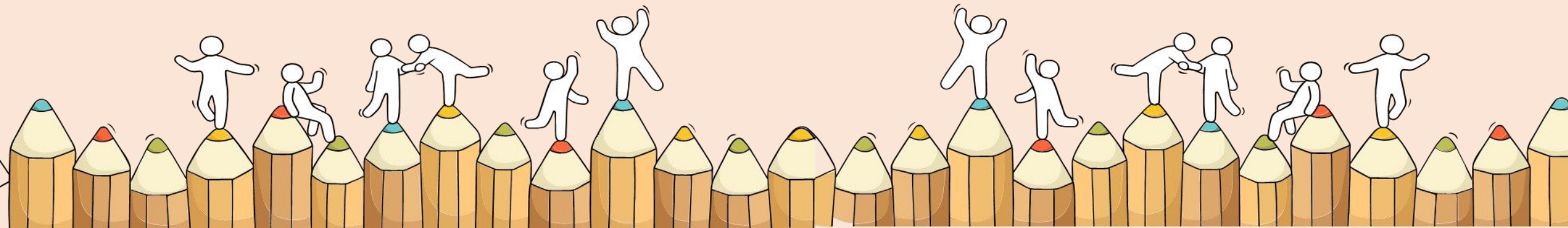


**The O-Level examination is  
one milestone in your  
education journey, and  
there are many more  
exciting pathways ahead.**

**Your future holds many  
opportunities waiting to be  
discovered!**

# Admissions Exercises

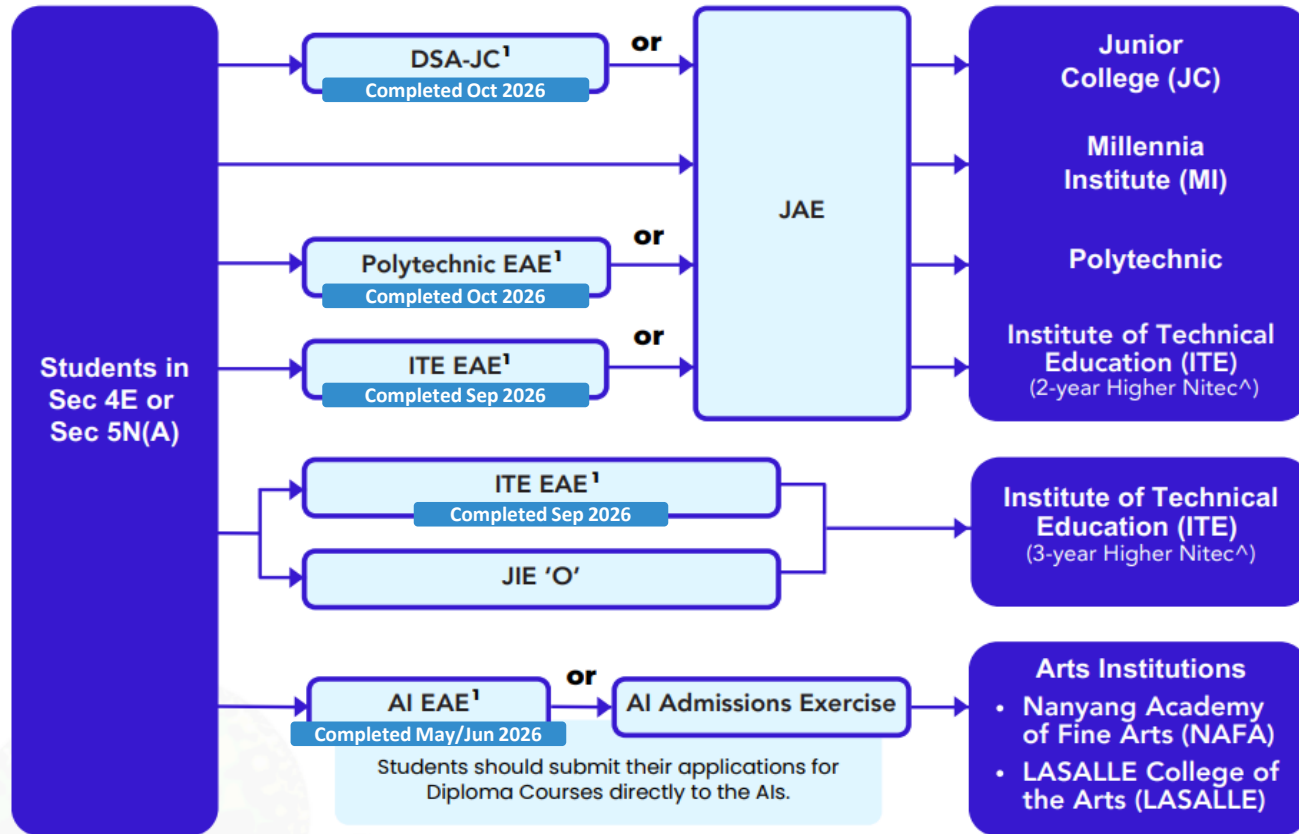
## Things to note





## Post-Secondary Admissions Exercises for Students in Sec 4 Express or Sec 5 Normal (Academic)

### Admissions exercises to take part in



Source: [Post-Secondary Admissions Exercises booklet](#)

<sup>1</sup>Students apply through these admissions exercises before their examinations.

^Please visit these websites for the list of courses for 2-year Higher Nitec:

<https://www.ite.edu.sg/current-full-time-students/progression/higher-nitec/>



for 3-year Higher Nitec:

<https://www.ite.edu.sg/secondary-school-students/ite-full-time-courses/3-year-4-year-higher-nitec>





# Details of Admissions Exercises



## JAE – Joint Admissions Exercise

JAE enables GCE O-Level holders to apply for courses offered by JCs, MI, polytechnics and ITE (2-year Higher Nitec courses).

**JAE:** <http://go.gov.sg/applyjae>



## JIE 'O' – Joint Intake Exercise 'O'

The JIE 'O' enables GCE O-Level holders to apply for the 3-year Higher Nitec courses conducted by ITE.

**JIE 'O':** <https://go.gov.sg/applyjio>

# Details of Admissions Exercises



## Arts Institutions – NAFA/LASALLE

GCE O-Level holders with the aptitude and interest to pursue the creative arts at the tertiary level may apply for diploma programmes at the Arts Institutions (AIs). Each AI runs its own admissions exercise, and interested students should apply directly to the institution.

The AIs also run their own Early Admissions Exercise, an aptitude-based admissions exercise open to graduating O-Level students, final-year Nitec and Higher Nitec students from ITE and graduating Integrated Programme (IP) / International Baccalaureate (IB) Year 4 students. This exercise allows students to apply for and receive conditional offers for admission to NAFA and LASALLE prior to receiving their final grades.

**NAFA:** <http://go.gov.sg/applynafafa>

**LASALLE:** <https://go.gov.sg/applylasalle>

# Application Period

<b>Application Period</b>	<b>Oct 2026 – Mar 2026*</b>	<b>6 calendar days starting from the day of the O-Level results release</b>
<b>Admissions Exercises</b>	<b>NAFA LASALLE</b>	<b>JAE JIE 'O'</b>

*\*Applications may close early once programme places have been filled.*

# Additional resources to help you make informed decisions



## About Discover On My Way:

Discover your **education and career interests** and **chart your personal and professional future** with Discover On My Way! **Explore** different careers, **connect** with industry professionals and peers, and **get firsthand exposure** at various job roles. *Let's get you on your way to Discover-ing!*

What to study?  
What career to pursue?

## Still figuring out your future?

Join programmes organised by NYC and our partners to meet professionals from various industries & youth on the same journey as you.



Learning Journey to  
\*SCAPE & ChaPanda



SEAcret Gatherings

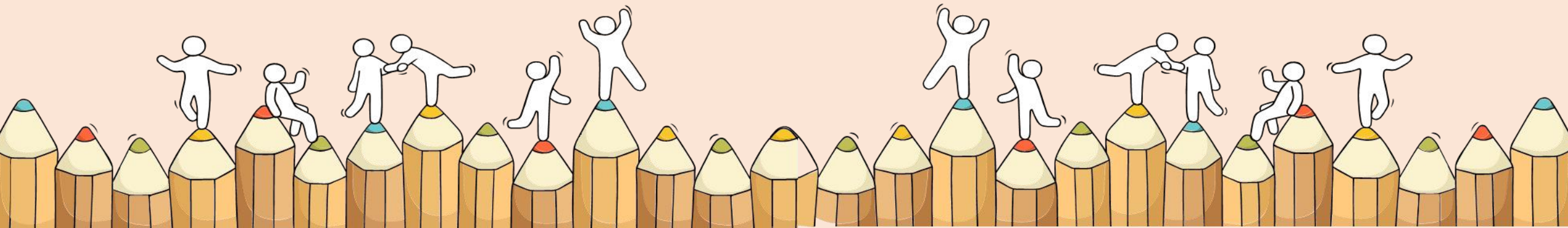


Industry Connects With Grab SG



<https://discover.nyc.gov.sg/omw>

# For Students Considering Private Education



# The 3Rs when deciding on Private Education

## Reasons

- Why are you furthering your studies?
- What are the job prospects for your preferred course?

## Readiness

- How ready are you to further your studies?
- Can you cope with the academic rigour and assignment deadlines?
- Can you fund your studies?

## Risks

- Do you know the possible drawbacks?
  - Your expected returns may not exceed the investments you put into your private education.
  - Private schools may make exaggerated claims.
  - Private schools may close due to various reasons.
  - You may not get a full refund if you withdraw from your course.





# 8 Things You Should Know Before You Enrol in A Private School



## School Registration

Ensure the school is registered with SkillsFuture Singapore (SSG). Review the school's registration period, expiry date and its overall registration track record.



## Partner Institution

Research on the partner institution conferring the diploma or degree, and whether the qualification is recognised by the industry.

## EduTrust Certification Scheme

Is the school EduTrust-certified\*? Under the scheme, private schools are assessed for their performance in areas such as school management and provision of student support services.

*\*Schools are required to obtain EduTrust certification in order to offer external degree programmes*



## School Premises

Head down to the campus ground to check the facilities and support services. Observe the study environment too.



## Fee Protection

Ask if there is any course fee protection so that you will be able to recover unconsumed course fees should the school close down.



## Beyond Course fees

Find out about the course syllabus and materials, graduation rates and employment prospects. Approach the alumni to find out what they think of the school.

## Teachers

Check if the teachers are qualified to teach the course.



## Internship

If industry attachment is included, find out which organisation you will be attached to, the period of attachment and the alternative arrangement should the attachment become unavailable. Verify the information with the organisation as well.





# JAE Application

- Eligible school candidates will receive a digital copy of Form A via their registered email addresses from 2.45 pm on Wed, 14 January 2026.
- All candidates eligible for JAE may also download a copy of individualized **Form A** from the JAE-Internet System (JAE-IS) during the application period. Form A has information of
  - Your gross aggregate scores for JC, MI, polytechnic and ITE aggregate types.
  - The JAE courses that you are eligible to apply in JAE.

# JAE Application

- ❑ Registration for courses under the JAE should be submitted online through the JAE-Internet System (JAE-IS)(available 24h) [www.moe.gov.sg/jae](http://www.moe.gov.sg/jae) using Singpass
- ❑ JAE registration period is from  
4.00 pm 14 Jan 2026 (Wed) to  
4.30 pm 19 Jan 2026 (Monday)
- ❑ You are strongly encouraged to complete the ***JAE worksheet to rank up to 12 courses*** before submitting your online application.

# JAE Application

You can find more information on the following MOE websites:

- ✓ **JAE website** for more details on the JAE  
([www.moe.gov.sg/jae](http://www.moe.gov.sg/jae))
- ✓ **SchoolFinder** for details of the offerings by JCs and MI,  
and their previous entry score ranges  
([www.moe.gov.sg/schoolfinder](http://www.moe.gov.sg/schoolfinder))
- ✓ **CourseFinder** for courses offered by the polytechnics and  
ITE, based on aggregate type and area of interest  
([www.moe.gov.sg/coursefinder](http://www.moe.gov.sg/coursefinder))

# What if you cannot log in to JAE-IS using Singpass?

Visit <https://www.moe.gov.sg/post-secondary/admissions/jae/application-request-assistance> to submit request form for assistance.

# Sample of Form A



Ministry of Education  
SINGAPORE

## 20XX Joint Admissions Exercise

## Form A

Name : TEST NAME Address : 111 BUKIT BATOK EAST AVENUE 1 #11 -11 SINGAPORE 111111 School Code : 1111		000684-1111 Centre Index No. : 2222222217
--	--	--

Please apply your course choices by **DD/MM/YYYY, 04:00 PM**.

### Your 20XX GCE O-Level Examination results:

ENGLISH LANGUAGE = A2, MALAY = B3, MATHEMATICS = C6, SCIENCE (CHEMISTRY & BIOLOGY) = B3,  
 PRINCIPLES OF ACCOUNTS = B3, HUMANITIES (SOCIAL STUDIES, HISTORY) = B3, GEOGRAPHY = C5  
 CCA = EXCELLENT

Subject description and  
grade obtained

### Your gross aggregate scores (without bonus points):

JC	MI	Polytechnic				ITE		
L1R5	L1R4	ELR2B2-A	ELR2B2-B	ELR2B2-C	ELR2B2-D	ELB4-A	ELR1B3-B	ELR2B2-C
19	14	14	17	17	17	14	14	17

Aggregate types and gross  
aggregate scores (without  
bonus points)

### Your eligible courses:

- You meet the entry requirements for the below courses and are eligible to apply. However, a place in the course is not guaranteed as admission is based on merit, your choices and available vacancies.
- Course codes and descriptions can be found in [www.moe.gov.sg/jaecourses](http://www.moe.gov.sg/jaecourses).

Explore JAE courses

### JC/MI:

You are eligible for all JC/MI courses.

Eligible courses

### Polytechnic/ITE:

C- Nanyang Polytechnic, N- Ngee Ann Polytechnic, R- Republic Polytechnic, S- Singapore Polytechnic, T- Temasek Polytechnic  
 V- Institute of Technical Education

C27 C28 C29 C30 C31 C32 C34 C35 C36 C38 C41 C42 C43 C45 C46 C47 C49 C50 C51  
 C52 C54 C62 C65 C67 C69 C70 C71 C72 C73 C75 C80 C81 C85 C87 C89 C93 C94 C96  
 C97 C98 N11 N12 N13 N14 N15 N40 N41 N42 N43 N44 N45 N48 N50 N51 N53 N54 N55  
 N56 N57 N59 N60 N65 N67 N69 N71 N72 N73 N74 N81 N82 N83 N85 N91 N92 N93 N94 N96

# Before accessing JAE-IS

- ❑ Students are advised to complete the **JAE worksheet** before accessing JAE-IS to register your choices.
- ❑ Completion of the **JAE Worksheet** will enable applicants to register more smoothly online.
- ❑ You are strongly advised to make full use of the 12 choices, where applicable. The choices should be listed in the **order of preference** and **cannot be repeated**.

## 2026 JOINT ADMISSIONS EXERCISE WORKSHEET

This JAE worksheet is provided to assist you before you do your online course application.

### (A) Personal Particulars

Please fill in your personal particulars.

NRIC/FIN	:	
Name	:	
Mobile Number*	:	
Contact Number	:	
Email Address^	:	

\*Your posting result will be sent via SMS to a valid Singapore mobile number.

^Your JAE verification slip, which captures your submitted course preferences, will be sent to this email address.

### (B) Course Preference

- You can apply for courses which you meet the eligibility criteria. Please refer to your Form A for course eligibility.
- Course codes and descriptions can be found in [www.moe.gov.sg/jaecourses](http://www.moe.gov.sg/jaecourses).
- You are strongly advised to make full use of the 12 choices, where applicable.

Choice Order	Course Code
1 <sup>st</sup>	
2 <sup>nd</sup>	
3 <sup>rd</sup>	
4 <sup>th</sup>	
5 <sup>th</sup>	
6 <sup>th</sup>	

Choice Order	Course Code
7 <sup>th</sup>	
8 <sup>th</sup>	
9 <sup>th</sup>	
10 <sup>th</sup>	
11 <sup>th</sup>	
12 <sup>th</sup>	

# Other points to note (1)

## □ JC/ MI

- JCs and MI offer a variety of subjects and different subject combinations. They may also set their own school-based criteria for subjects offered, based on professional and student-centric considerations.
- **Posting to an Arts, Science or Commerce course does not guarantee that students will be able to offer their preferred subject combinations.**
- Students should check the website of the respective JCs and MI for more details on the subject combinations offered in the Arts, Science and Commerce courses and school-based criteria for subjects offered.

<https://www.moe.gov.sg/post-secondary/admissions/jae/junior-colleges-and-millennia-institute>



# Other points to note (2)

## ❑ Polytechnic/ ITE

- Beyond academic requirements, students should note that **some polytechnic/ ITE courses may require students to meet non-academic requirements, such as passing of medical examinations, in order to comply with industry requirements.**
- These requirements can also be found in the full listing of 2026 JAE courses document (under respective institution) and students are advised to take these requirements into account when making their choices.

<https://www.moe.gov.sg/post-secondary/admissions/jae/polytechnics>

[Joint Admissions Exercise \(JAE\): ITE admission and courses | MOE](#)

## Key Events and Dates

ACTIVITY	DATE	REMARKS
Application Period	14Jan 2026 (4.00 pm) to 19 Jan 2026 (4.30 pm)	
Release of Application Results	3 Feb 2026 (9.00 am)	<ul style="list-style-type: none"><li>• <b>SMS</b>, which is sent to the local mobile number in your application.</li><li>• <b>JAE-IS</b>, which can be accessed using your Singpass.</li></ul>
Acceptance of Offer (JC/ MI)		Report to JC/ MI on the morning of <b>Wed 4 Feb 2026</b>
Appeal (JC/ MI)	Visit the school website to find out about the appeal process and timeline.	If you are waiting for an appeal outcome, you should still report to the school you are posted to. If your appeal is successful, inform your posted JC or MI subsequently.

## Key Events and Dates

ACTIVITY	DATE	REMARKS
Acceptance of Offer (Polytechnic)	3 Feb onwards	Receive an email with the enrolment instructions by <b>end February 2026</b> .
Acceptance of Offer (ITE)		<p>Accept the course offer online at <a href="https://istudent.ite.edu.sg/">https://istudent.ite.edu.sg/</a> by the date stated in the email. Log in using your User ID and Password.</p> <p>If you are waiting for an appeal outcome, you must still accept the offer of your posted course online. If your appeal is successful, inform ITE subsequently.</p>
Appeal (Poly/ITE)	9am on Tue, 3 Feb 2026 to 4pm on Fri 6 Feb 2026	Through the <a href="#">JAE Online Appeal Portal</a> .

# Accepting offer

## If you are posted to a Junior College Or Millenia Institute

- ***You must report to the junior college (JC) or Millennia Institute (MI) on the morning of Wednesday, 4 February 2026.***
- If not, your place will be forfeited. It will then be made available to other eligible applicants appealing for a place in the course.
- You can wear your secondary school uniform and bring your original identification documents (NRIC, student's pass, or passport) when you report.
- ***If you are waiting for an appeal outcome, you should still report to the school you are posted to. If your appeal is successful, inform your posted JC or MI subsequently.***

# Accepting offer

## If you are posted to a Polytechnic

- By **end February**, you will receive an enrolment email. It contains instructions on the enrolment process.
- ***You are required to complete your online enrolment by the deadline stated.*** If not, your place will be forfeited and made available to other eligible applicants appealing for a place in the course.
- ***If you have submitted an appeal, you should still complete the online enrolment of your posted course while awaiting your appeal outcome.*** If your appeal is successful, inform the polytechnic subsequently.

# Accepting offer

## If you are posted to ITE

- On the day of release of JAE posting results, you will receive an **enrolment email** from the Institute of Technical Education (ITE).
- ***You must accept the course offer online by the date stated in the email.*** If not, your place will be forfeited and made available to other eligible applicants appealing for a place in the course.
- ***If you are waiting for an appeal outcome, you must still accept the offer of your posted course online.*** If your appeal is successful, inform ITE subsequently.
- For course and application enquiries, you can call ITE at 1800 2222 111 from 8.30am to 6pm on Mondays to Fridays.

# Appeal/ Transfer after Posting Results Release

**Please note that students must report to the institution they are posted to or accept the course offer online while waiting for the result of their appeal/transfer application.**

## **To JC/MI**

To appeal for a place in a JC or MI, visit the school website to find out about the appeal process and timeline. Use SchoolFinder to find the school's contact.

Note that students who wish to appeal for a place in the JC/MI must meet

- (i) the minimum entry requirements for admission to JC/MI and**
- (ii) the net L1R5/L1R4 aggregate score of the lowest ranked student who is admitted to the course in that JC/MI in the 2024 JAE.**



# Appeal after Posting Results Release

Please note that students must report to the institution they are posted to or accept the course offer online while waiting for the result of their appeal/transfer application.

**To Polytechnic/ ITE**

**3 February 2026 (Tuesday), 9.00 am to 6 February 2026 (Friday), 4.00 pm**

Appeal **online** through a combined polytechnic & ITE Higher Nitec appeals portal at **[JAE Online Appeal Portal](#)**

You may submit an appeal application for up to **six polytechnic diploma** and/or **ITE 2-year Higher Nitec** courses, where:

- You must meet the course's minimum entry requirements (MERs), and
- Your aggregate score must be equal to or better than the last student posted in current year's JAE.
- Last aggregate scores will be available under the **[Courses tab](#)** from **3 Feb 2026**.

# Release of JAE Appeal Results

**Please note that students must report to the institution they are posted to or accept the course offer online while waiting for the result of their appeal/transfer application.**

The result of your appeal will be released on **23 February 2026 (Monday), 9.00 am**

You will receive an email and SMS notification to log into this portal to view your appeal outcome.

Access <https://jaeappeal.edu.sg/> portal to check on the outcome of your appeal by **25 February 2026 (Tuesday)**.

# Release of JAE Appeal Results

**Please note that students must report to the institution they are posted to or accept the course offer online while waiting for the result of their appeal/transfer application.**

## **Withdrawing of Appeal**

6 Feb 2026 (Fri), 4.00 pm. Your original posting will be retained if:

- You withdraw before the deadline, and
- You had accepted your polytechnic or Higher Nitec posting.
- (If you did not accept your Higher Nitec posting, withdrawing will leave you without any posting.)

# Release of JAE Appeal Results

Please note that students must report to the institution they are posted to or accept the course offer online while waiting for the result of their appeal/transfer application.

## To Polytechnic

- Enrolment instructions sent by post/email (end-Feb to early-Mar).

## To ITE

- Login instructions emailed by **Mon, 23 Feb 2026**. Accept between **23 Feb 2026 (Mon), 9.00 am and 25 February 2026, 11.59 pm (Wed)** at <https://student.ite.edu.sg>.
- If you already accepted a Higher Nitec course earlier via JAE, and are offered another Higher Nitec course, your status will update automatically. You will be able to check your course status at <https://student.ite.edu.sg>.

# Release of JAE Appeal Results

Please note that students must report to the institution they are posted to or accept the course offer online while waiting for the result of their appeal/transfer application.

## Important Notes

- If your appeal is successful, your original JAE posting will be revoked.
- If unsuccessful, your original posting is retained.
- Withdrawals from the appeal must be made by **6 Feb 2026 (Fri), 4.00 pm**.
- Number of login attempts are capped at 10 before lockout.

# PFP 4N(A) Students only

- PFP-eligible students will receive a copy of Form P from their respective secondary schools in person.

ACTIVITY	DATE	REMARKS
Application Period	14 Jan 2026 (1.30 pm) to 19 Jan 2026 (4.30 pm)	Submit applications online via the PFP website at <a href="http://pfp.polytechnic.edu.sg/PFP/index.html">pfp.polytechnic.edu.sg/PFP/index.html</a> using SingPass account.
Release of Posting Results	26 Jan 2026 (1.30 pm)	Through PFP website
Accept/Reject/Appeal for a change of course	29 Jan 2026 (4.30pm)	


# DPP 4N(A) Students only

ACTIVITY	DATE	REMARKS
Application Period	14 Jan 2026 (12 am) to 19 Jan 2026 (11.59 pm)	submit their DPP applications online via the DPP application portal at <a href="http://www.ite.edu.sg/apply-for-ite-courses">www.ite.edu.sg/apply- for-ite-courses</a>
Release of Final Application Phase	21 Jan 2026 (9 am)	Through DPP portal
Accept/Reject DPP offer	26 Jan 2026 (11.59 pm)	



# Reaching out for support is a sign of strength

If you have questions about your options or are not coping well, you can reach out to trusted adults such as your parent/guardian, teacher, School Counsellor or ECG Counsellor. You can also talk to a trusted friend.



*Who can we  
go to for ECG  
advice?*

The ECG Centre @ MOE offers online or phone ECG counselling services. Make an appointment via [go.gov.sg/moe-ecg-centre](https://go.gov.sg/moe-ecg-centre)

- Weekdays now to 21 January 2026, from 9am to 5pm
  - Saturdays 9am to 12pm

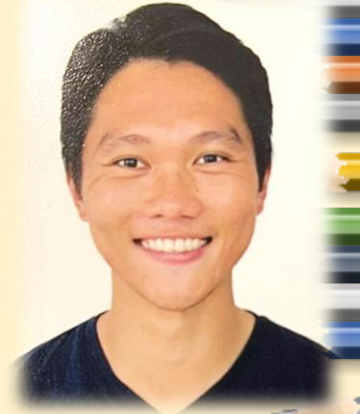


# O-Level ECG Counselling Support

## 1. In school / online – for Damaians only

- 14 Jan (Wed), 3.30 pm to 4.30pm
- 15, 16 Jan (Thurs-Fri) 8am to 12pm & 1pm to 4pm
- 19 Jan (Mon) 8am to 12pm & 1pm to 2pm

Venue : Student Lounge (beside school hall)



Mr Edwin Khong  
ECG Counsellor



[https://go.gov.sg/dssecgcappointment  
booking](https://go.gov.sg/dssecgcappointmentbooking)

<https://go.gov.sg/dssecgcappointmentbooking>

Check your email inbox. ECGC will send you a confirmation email on your booking appointment.

**(JAE Application closes at 4.30pm on 19 Jan 2026)**


*BEST  
WISHES*

*We wish you all the best as you progress  
to your next stage of education.*

Wishing you  
All the Best



As you embark on this  
new beginning,  
may you be filled with  
optimism, courage, and  
a sense of adventure





**DAMAI  
SECONDARY SCHOOL  
ALUMNI**



**BE AN ALUMNI**

- An opportunity to stay in touch and contribute to the school
- Share your learning experiences (higher learning institutions) to inspire your juniors

